

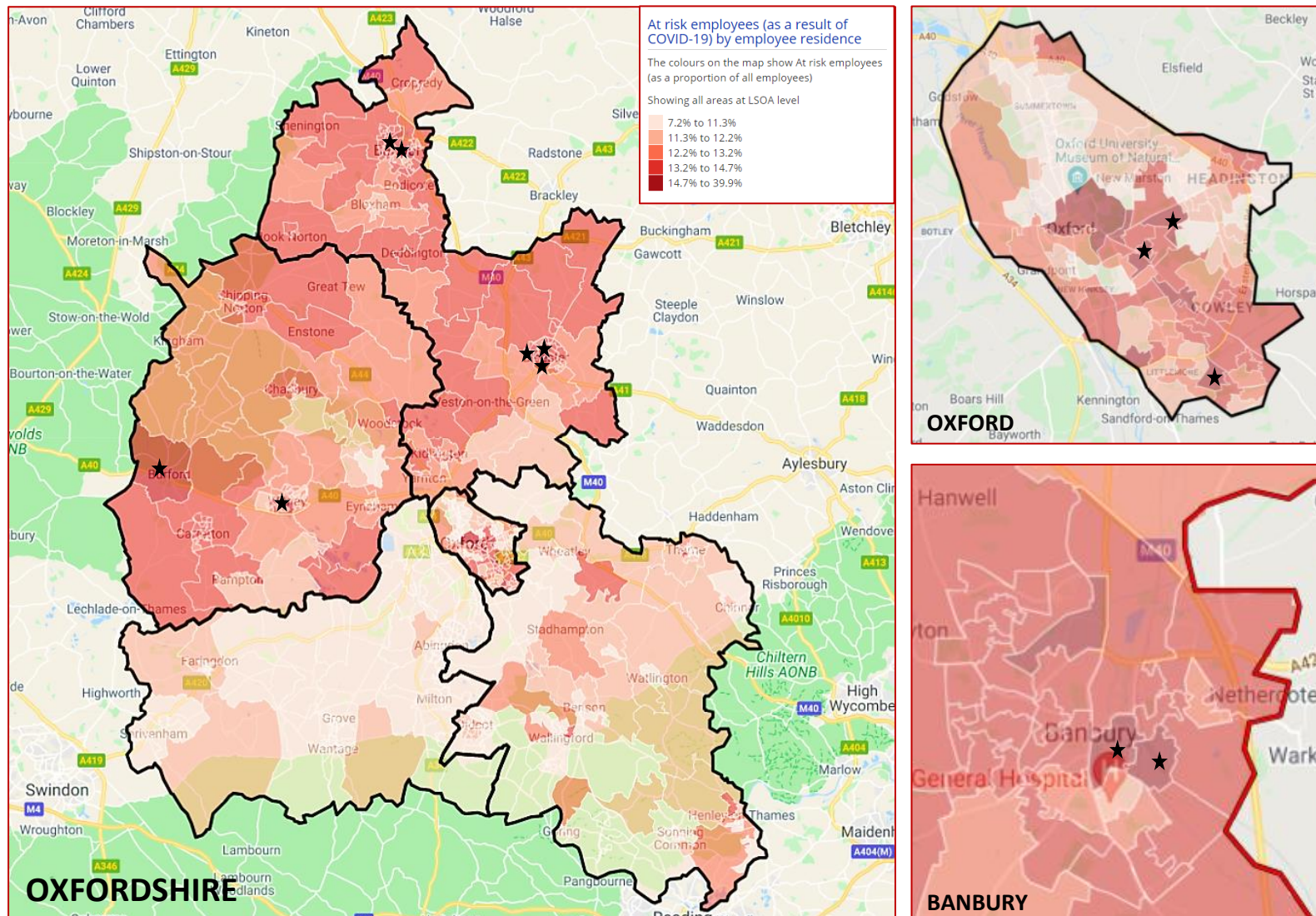
Chart of the Month June 2021 – Employees at risk as a result of COVID-19 (by employee residence)

This month's chart shows the proportion of employees that might be at risk or losing their jobs based on the furlough claims data supported by the Coronavirus Job Retention Scheme (CJRS) by HMRC. This dataset was published in May 2021 and it contains data on the number of claims submitted by employers up to 31st of March 2021. Figures are calculated using the total employments furloughed and the eligible employments from each area's employment sector profile. This dataset was produced by Oxford Consultants for Social Inclusion (OCSI). For more information on furlough data please visit the [HMRC coronavirus \(COVID-19\) statistics main page](#).

Key findings:

- Areas in Cherwell with the highest rates of employees at risk are in parts of Banbury Grimsbury, Bicester South and Bicester West MSOAs, all above 17%.
- Oxford has an area with the highest percentage of employees at risk in Oxfordshire (Oxford 010D, 18.85%). In Oxford, areas with the highest rates of employees at risk are located in LSOAs within Blackbird Leys, Churchill, East Central Oxford and Oxford Central MSOAs.
- South Oxfordshire has some of the lowest rates of employees at risk in the county, all below 16%. Highest rates are in parts of Wheatley & Great Haseley, Henley North, Thame South, Wallingford and Brightwell, and Berinsfield & Wittenham MSOAs.
- Vale of White Horse has the lowest rates of employees at risk in Oxfordshire, all below 15%. The highest rates are located in LSOAs within Radley, Wootton & Marcham, Faringdon & Stanford, South Wantage, Harwell & Blewbury, and Shrivenham, Watchfield & Uffington MSOAs.
- Areas in West Oxfordshire with the highest rates of employees at risk are in parts of Burford & Brize Norton, Witney Central, Carterton North, and Woodstock, Stonesfield & Tackley.

Figure 1. Map of employees at risk in Oxfordshire (by employee residence)



Source: OCSI/HMRC, 2021

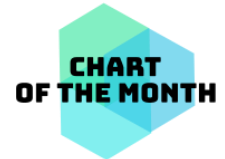


Table 1. Top 10 Most at risk LSOAs in Oxfordshire (marked with a star on the map) ★

LSOA Name	% of employees at risk
Oxford 010D	18.85%
Cherwell 004A	18.27%
Cherwell 014D	17.83%
Cherwell 015D	17.62%
West Oxfordshire 012C	17.49%
Cherwell 004H	17.16%
West Oxfordshire 010E	17.15%
Cherwell 014A	17.07%
Oxford 011A	17.03%
Oxford 017D	17.00%

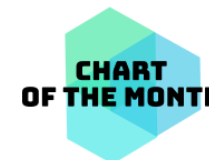
Source: OCSI/HMRC, 2021

Table 2. Top 10 Most at risk LSOAs by district.

Cherwell	
LSOA Name	% of employees at risk
Cherwell 004A	18.27%
Cherwell 014D	17.83%
Cherwell 015D	17.62%
Cherwell 004H	17.16%
Cherwell 014A	17.07%
Cherwell 003A	16.88%
Cherwell 009C	16.85%
Cherwell 009D	16.67%
Cherwell 005C	16.58%
Cherwell 004C	16.58%

Oxford	
LSOA Name	% of employees at risk
Oxford 010D	18.85%
Oxford 011A	17.03%
Oxford 017D	17.00%
Oxford 011F	16.81%
Oxford 008A	16.74%
Oxford 013C	16.67%
Oxford 016F	16.65%
Oxford 011G	16.39%
Oxford 011D	16.32%
Oxford 015C	16.26%

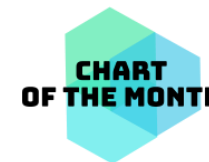
South Oxfordshire	
LSOA Name	% of employees at risk
South Oxon 004A	15.86%
South Oxon 016B	15.69%
South Oxon 003B	15.66%
South Oxon 012F	15.44%
South Oxon 006C	14.51%
South Oxon 017A	14.46%
South Oxon 017C	14.42%
South Oxon 016A	14.35%
South Oxon 007B	14.33%
South Oxon 001D	14.30%



Vale of White Horse	
LSOA Name	% of employees at risk
Vale of WH 003A	14.48%
Vale of WH 016F	13.96%
Vale of WH 015E	13.85%
Vale of WH 009B	13.75%
Vale of WH 009A	13.70%
Vale of WH 016E	13.63%
Vale of WH 008C	13.60%
Vale of WH 011E	13.53%
Vale of WH 003E	13.38%
Vale of WH 010B	13.34%

West Oxfordshire	
LSOA Name	% of employees at risk
West Oxon 012C	17.49%
West Oxon 010E	17.15%
West Oxon 012B	16.37%
West Oxon 013H	16.37%
West Oxon 004D	16.34%
West Oxon 004E	16.29%
West Oxon 014C	16.22%
West Oxon 013G	16.21%
West Oxon 013E	16.13%
West Oxon 014A	16.12%

Source: OCSI/HMRC, 2021



Source:

[HMRC - Coronavirus Job Retention Scheme \(CJRS\) Statistics](#)

[Local Insight – Oxford City and District Data Service](#) (needs login credentials)

Data note prepared by:

Carlos Barrero

District Data Analysis Service

cbarrero@oxford.gov.uk

07483 010435

On behalf of:

- Cherwell District Council
- Oxford City Council
- South Oxfordshire District Council
- Vale of White Horse District Council
- West Oxfordshire District Council

Data notes and briefings from this service are available at [District Data Service website](#).