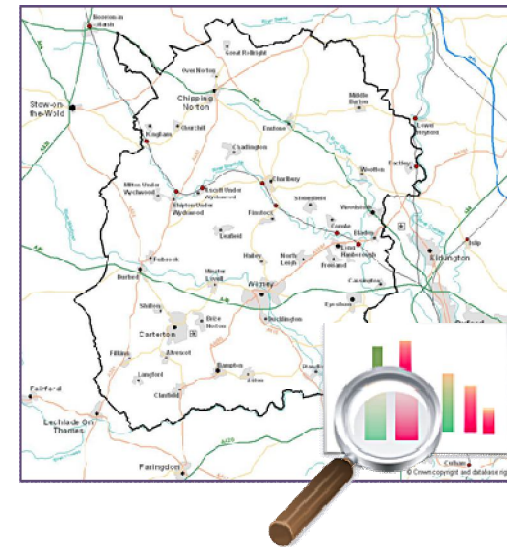


Overview of data and evidence for **West Oxfordshire**

29 October 2013

Margaret Melling, District Data
Analysis Service



This presentation

- Introduction
- **Changing population**
- **Housing**
- **Local economy**
- Summary
- Finding out more

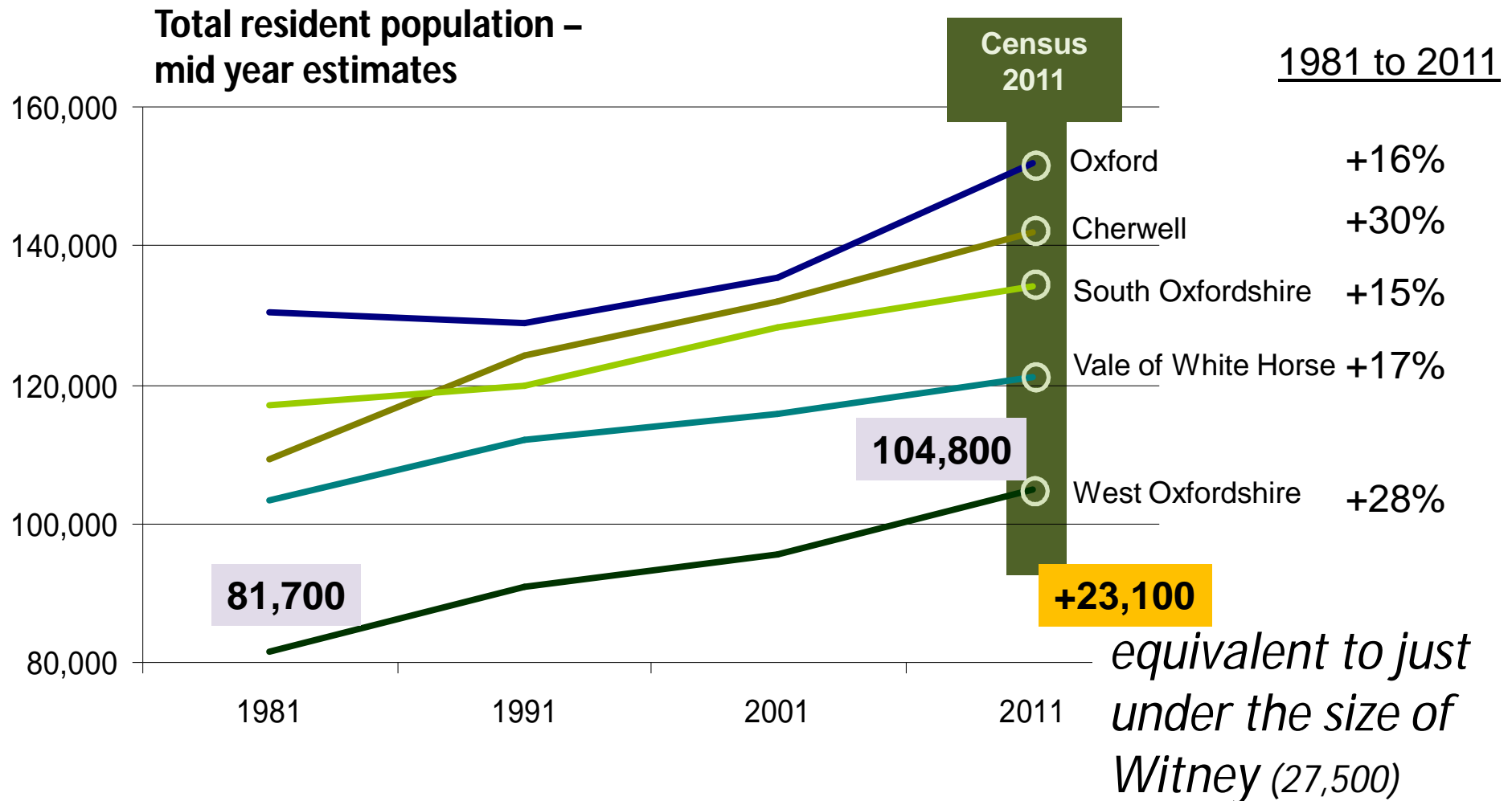


Introduction

- Census survey carried out 27 March 2011
- 97% of residents completed the survey in West Oxfordshire (compared with 94% nationally)
- Data started to be released July 2012, major releases planned over next 6 months+ including travel to work (flow) data
- Likely to be the last major census survey
- This overview combines census findings with data from other sources

CHANGING POPULATION

Over past 30 years, population in West Oxfordshire has increased by 23,100 (+28%)

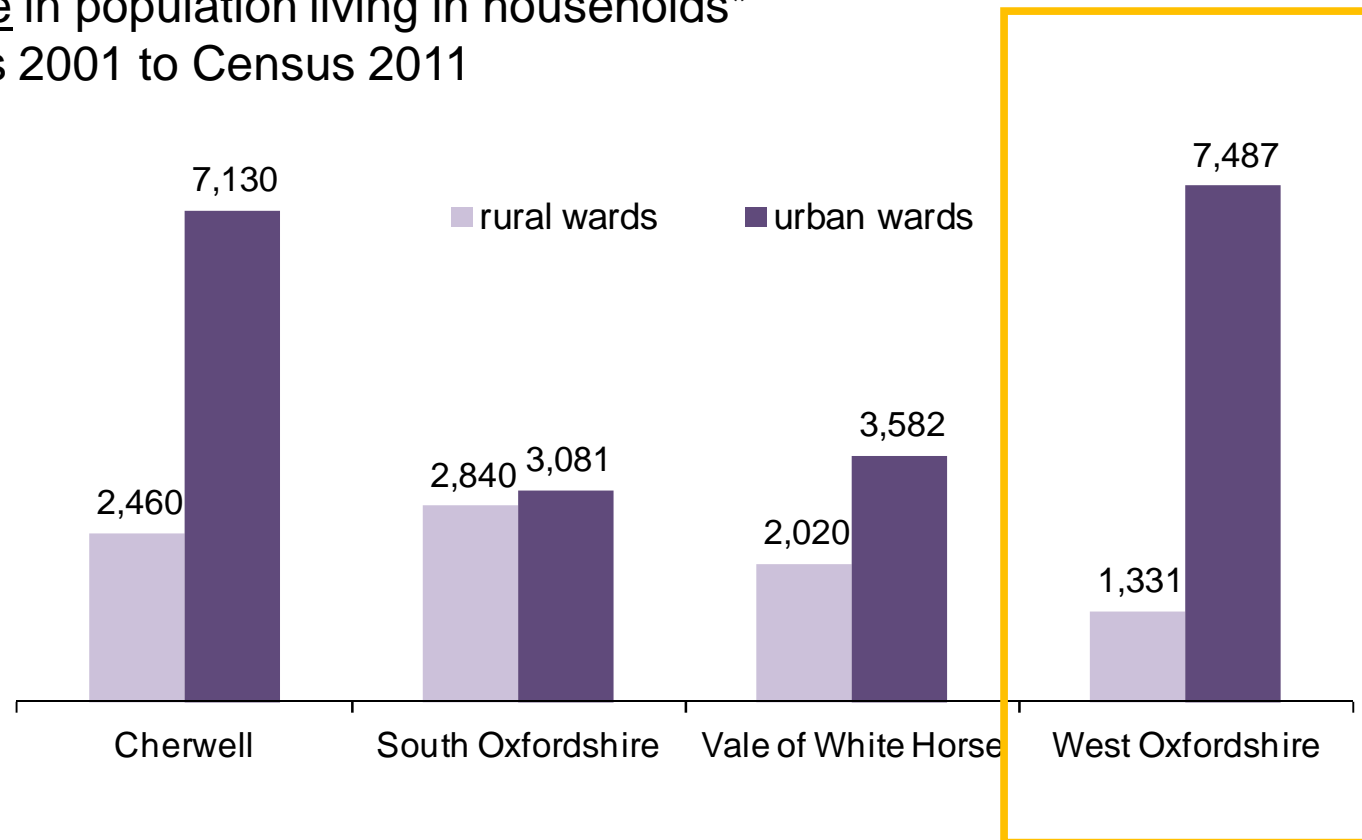


Source: ONS Mid year estimates from nomis and Census 2011

Much lower population growth in rural West Oxfordshire compared with other districts



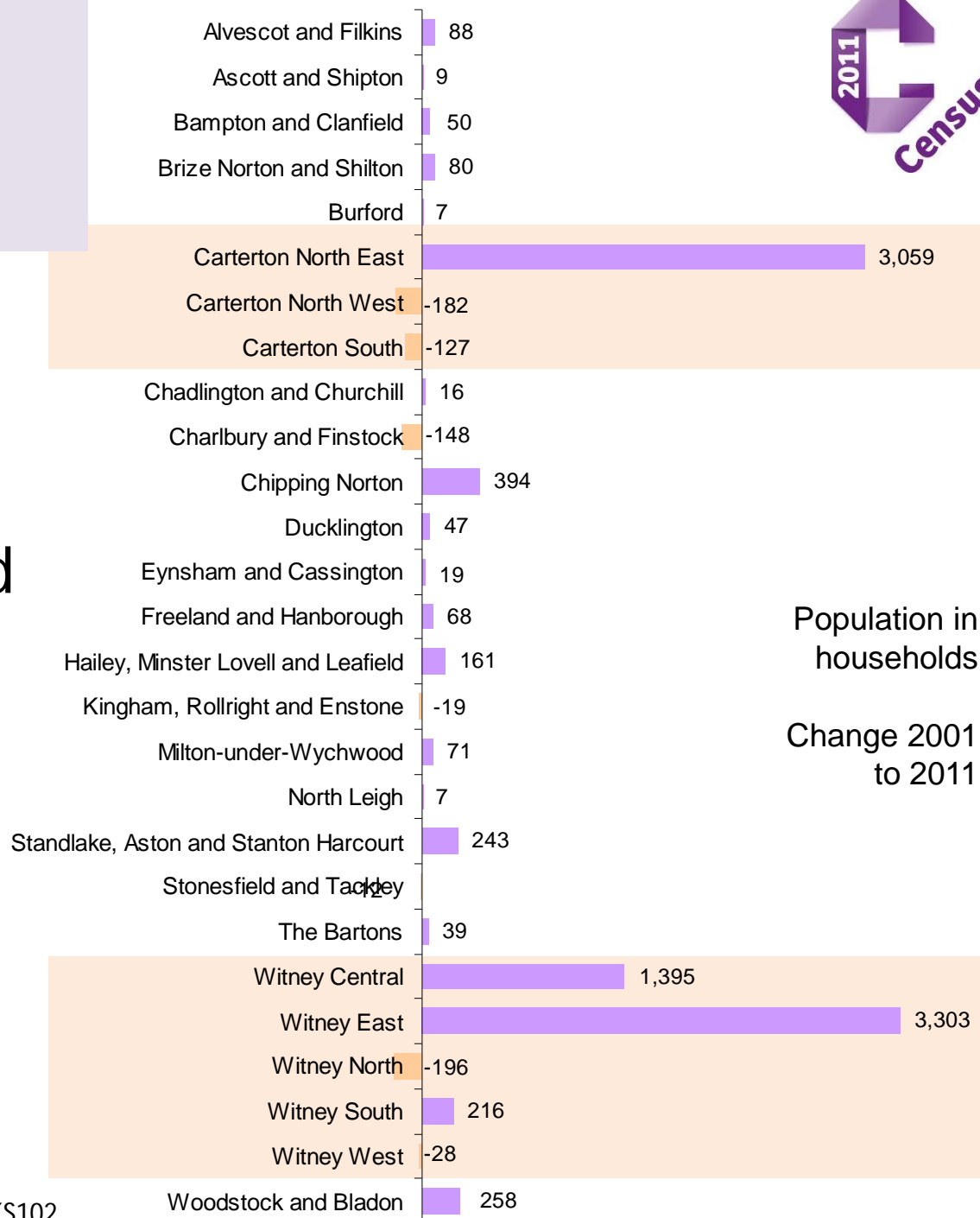
Change in population living in households*
Census 2001 to Census 2011



*excluding population in communal establishments (military bases, care homes, student accommodation)
Rural / Urban definition based on 2001 Census URBAN includes Carterton, Witney, Ducklington
ONS Census 2001 table KS02, Census 2011 table KS102 from neighbourhood statistics; ONS Rural Definition of wards (2004)

2001 to 2011 change in population living in households

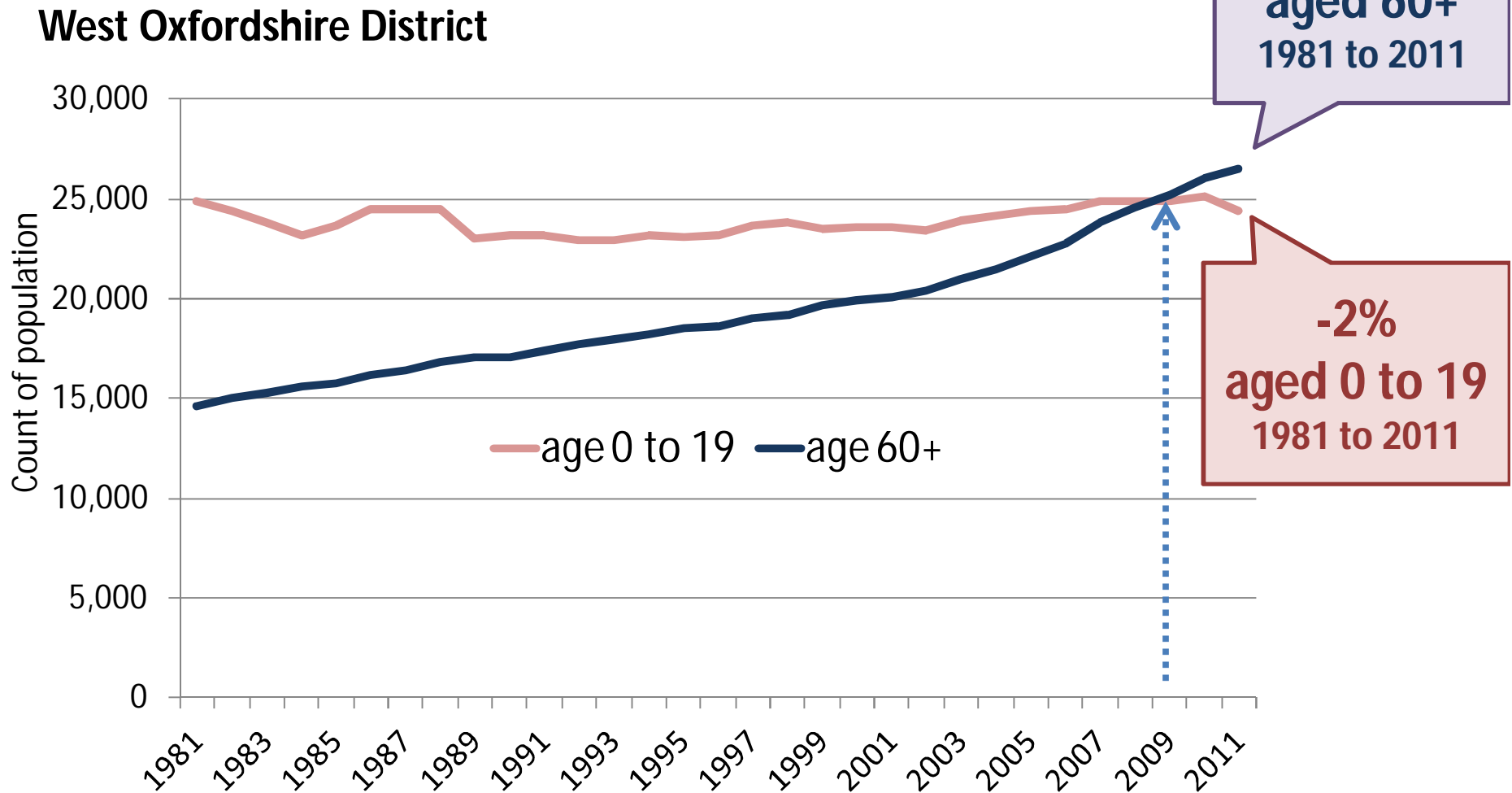
- Growth in Carterton and Witney
- Household population in 6 wards has declined



Population in households
Change 2001 to 2011

Source: ONS Census 2001 table KS02, Census 2011 table KS102

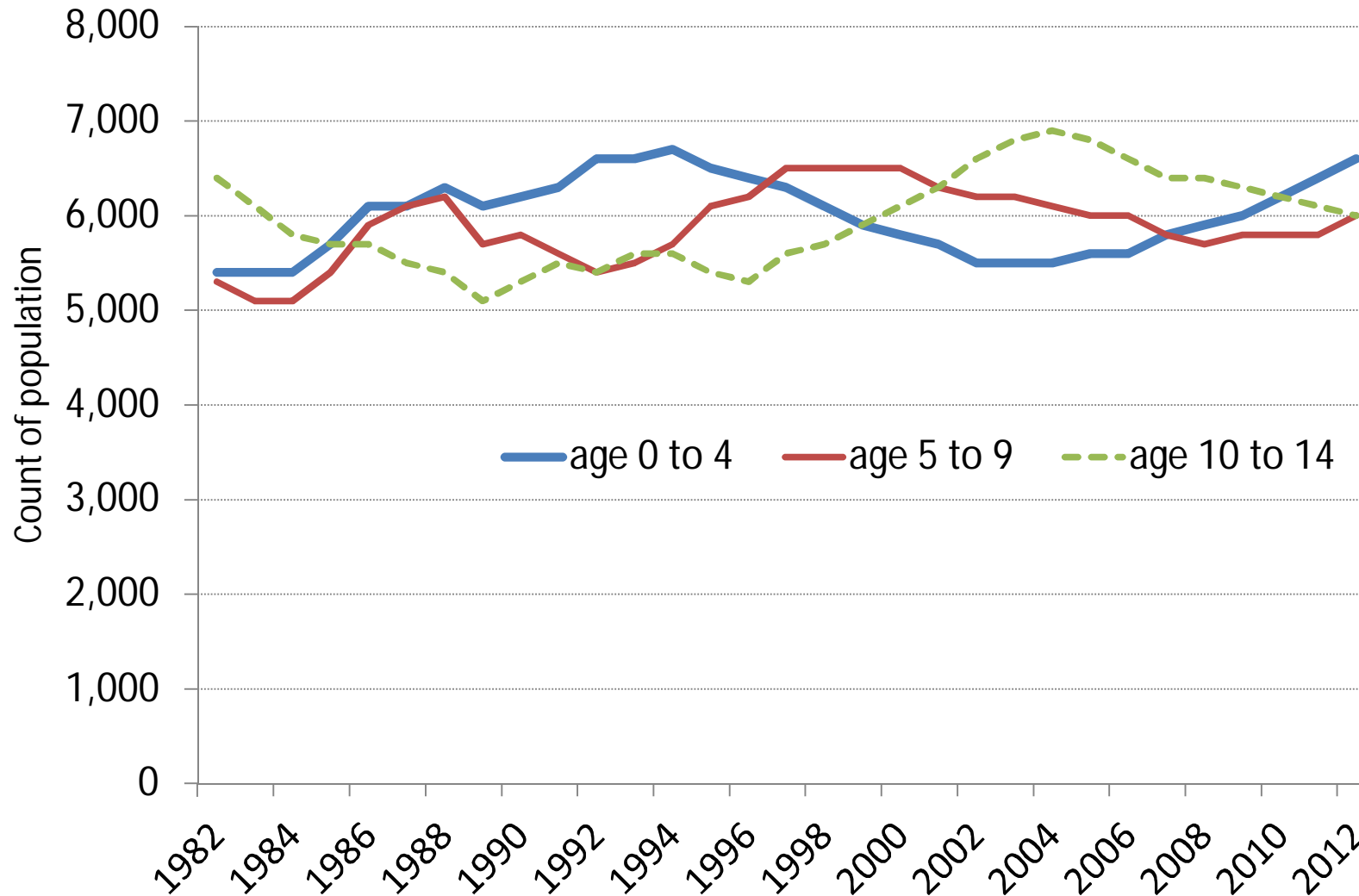
Growth in older population continues a long term trend, number of young people overall remains at similar level



Source: ONS Mid year estimates from nomis

Recent growth in 0-4 year olds

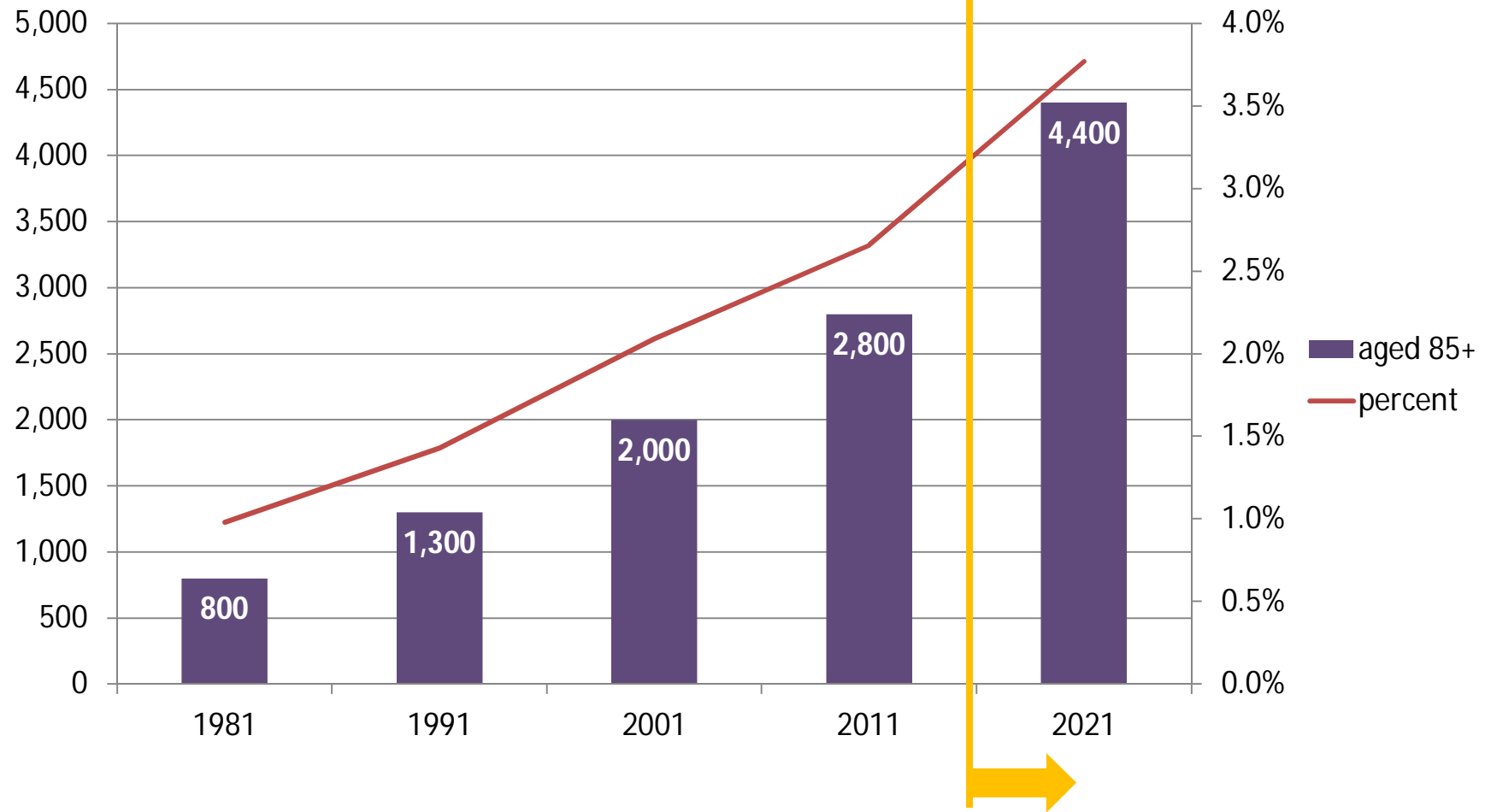
West Oxfordshire



Source: ONS Mid year estimates from nomis

Number of oldest old expected to continue to increase

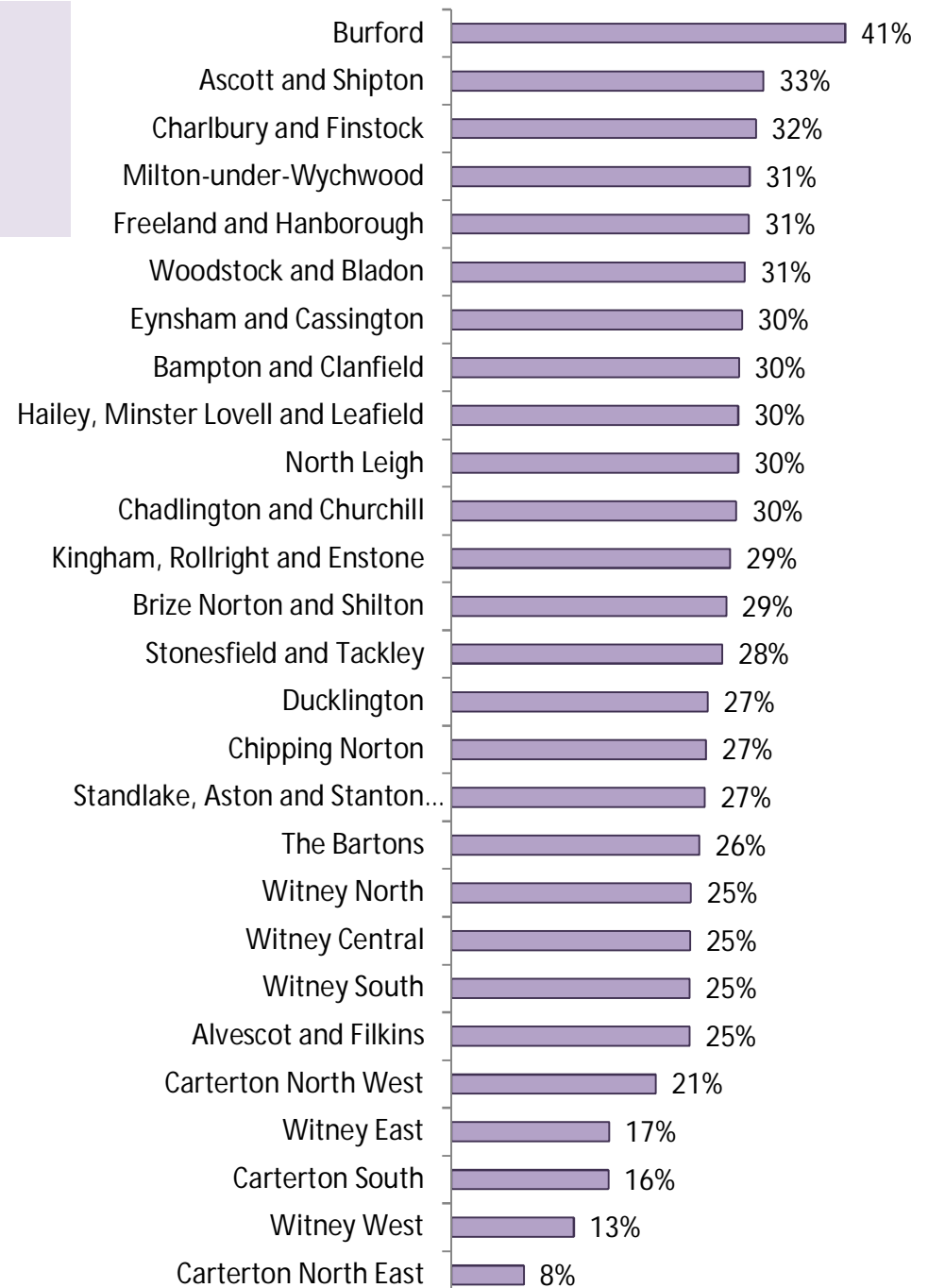
West Oxfordshire
number and percent of residents **aged 85+**



Source: ONS Mid year estimates from nomis and interim 2011 subnational population projections

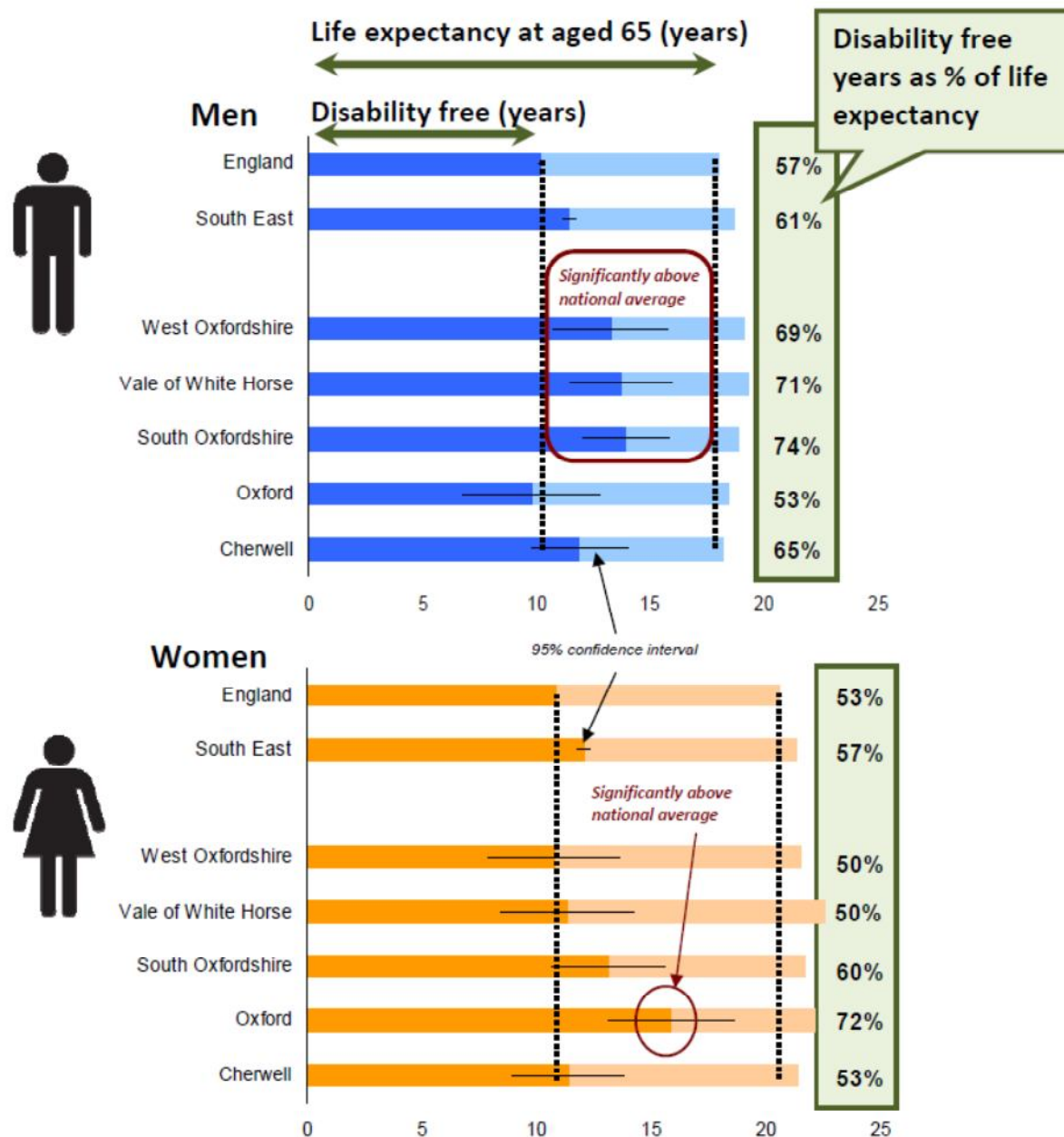
Ageing trend affects some communities more than others

Percent of people aged 60 and over



Source: ONS Census 2011 table KS102

Disability free life expectancy above average for men

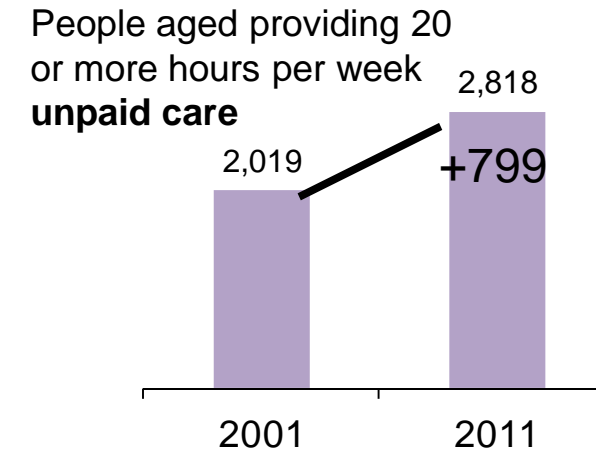
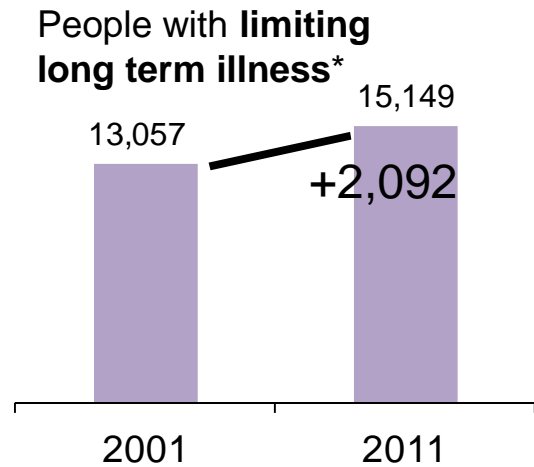
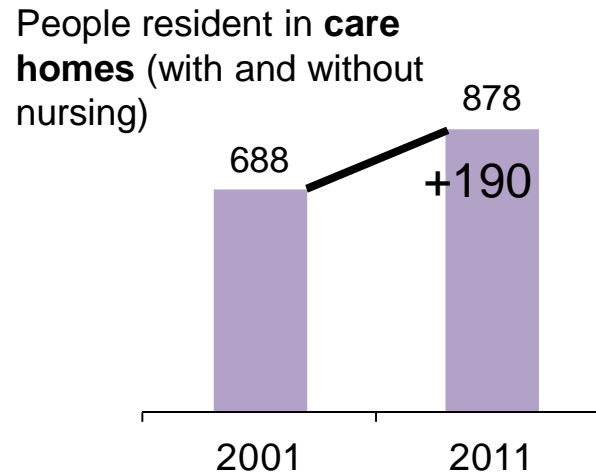
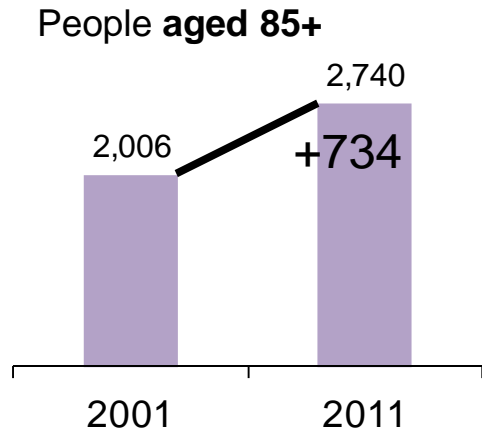


Source: ONS Sub-national Disability-free life expectancy (DFLE) for men and women at age 16 and at age 65: England, 2007–2009 (experimental statistics)

At risk of isolation?



West Oxfordshire district



*Census 2001 = people with limiting long term illness;
Census 2011 = people with day-to-day activities limited a little + activities limited a lot

Largest BME group remains "Other White"



West Oxfordshire

Number of people in ethnic minority groups 2001 to 2011



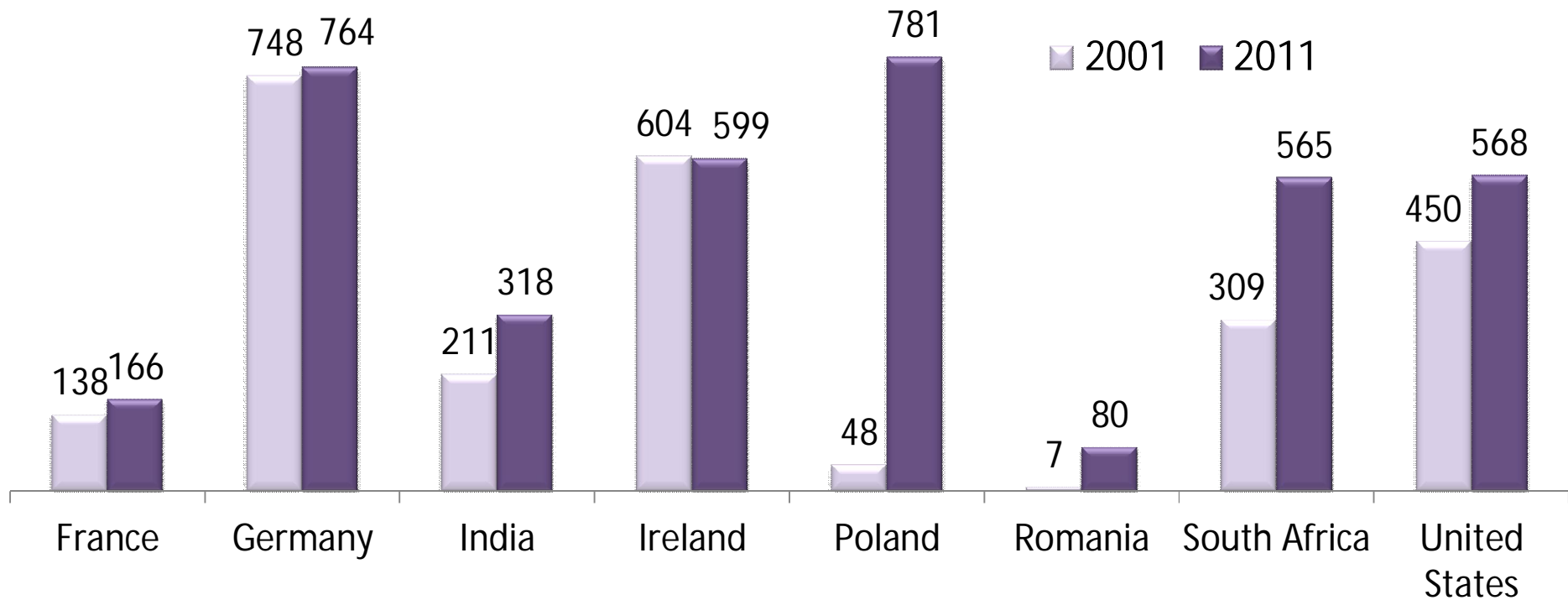
51% of ethnic minority population live in rural wards

West Oxfordshire residents born outside UK from Germany, Ireland, Poland, South Africa and USA



Count by country of birth
(selected countries)

West Oxfordshire

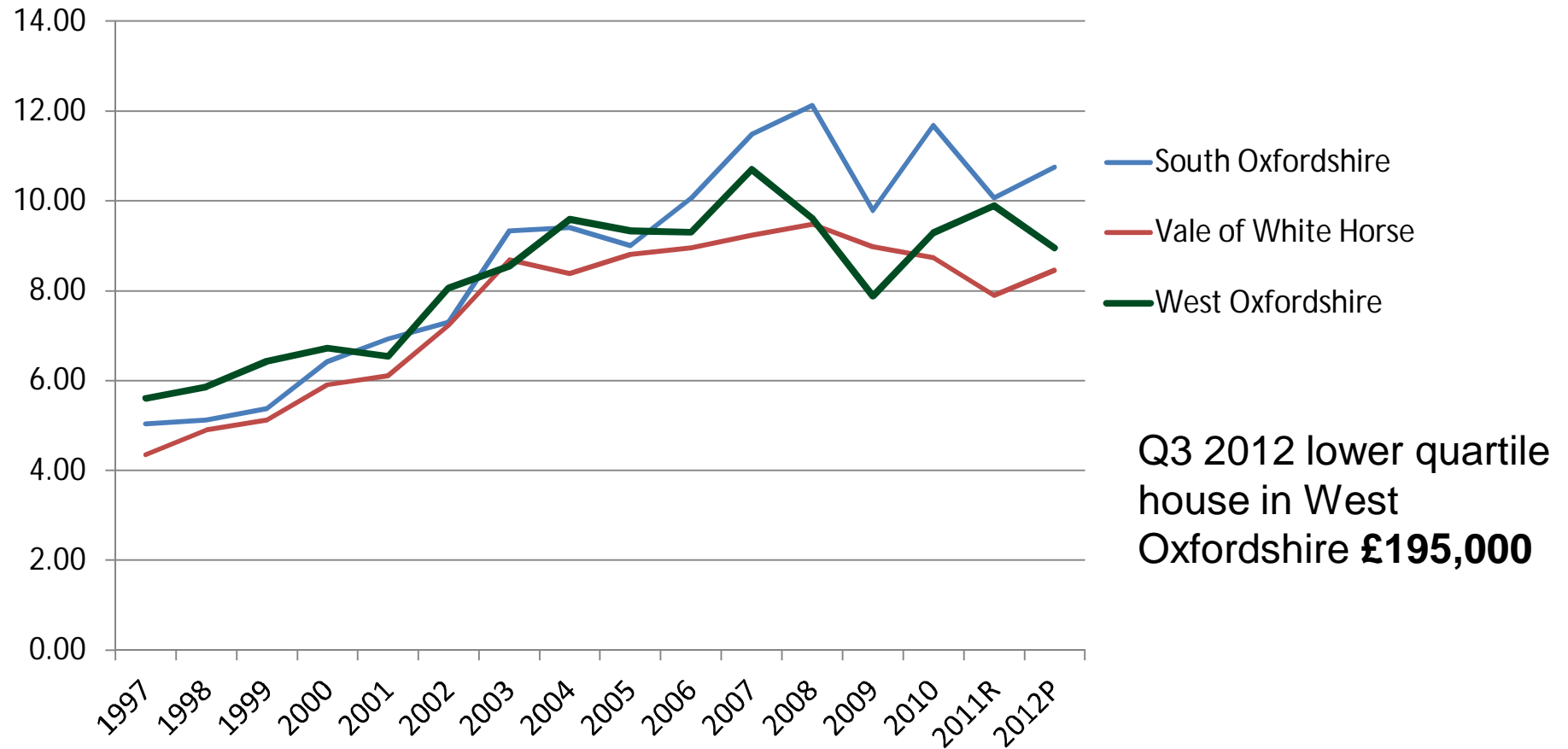


HOUSING



Lowest cost market housing around 9 times lower quartile earnings

Ratio of lower quartile house price to lower quartile earnings



West Oxfordshire has below average % households with 1 or 2 bedrooms (31%)



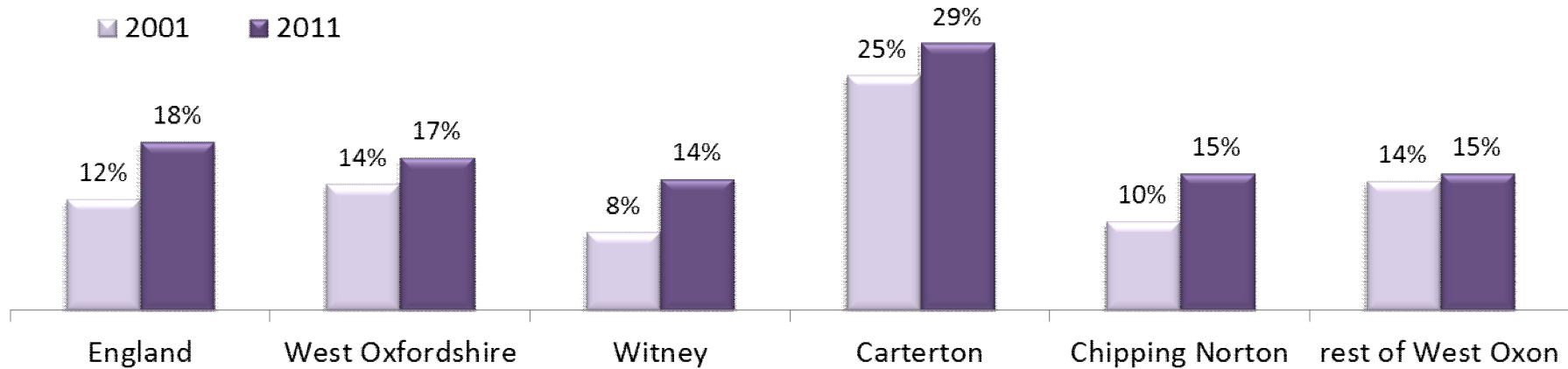
Households by number of bedrooms Census 2011 as % of all households



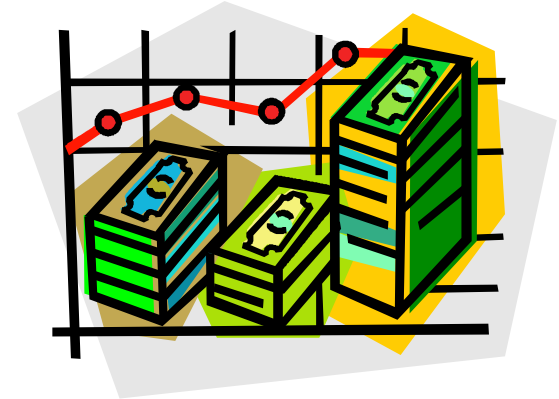
Increase in proportion of households in private rented accommodation



Percent of households that are rented privately 2001 to 2011

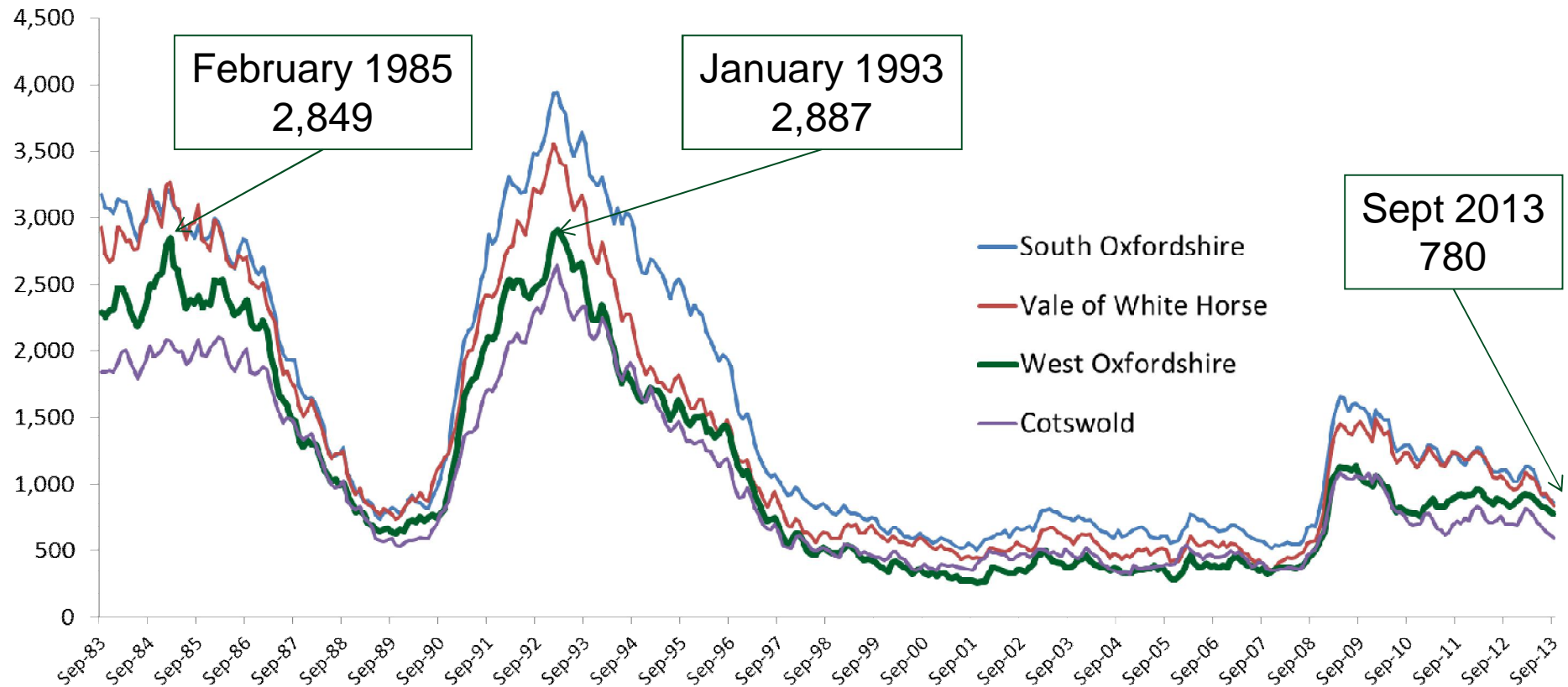


LOCAL ECONOMY



Claimant count continuing to decline

Claimant count September 1983 to September 2013

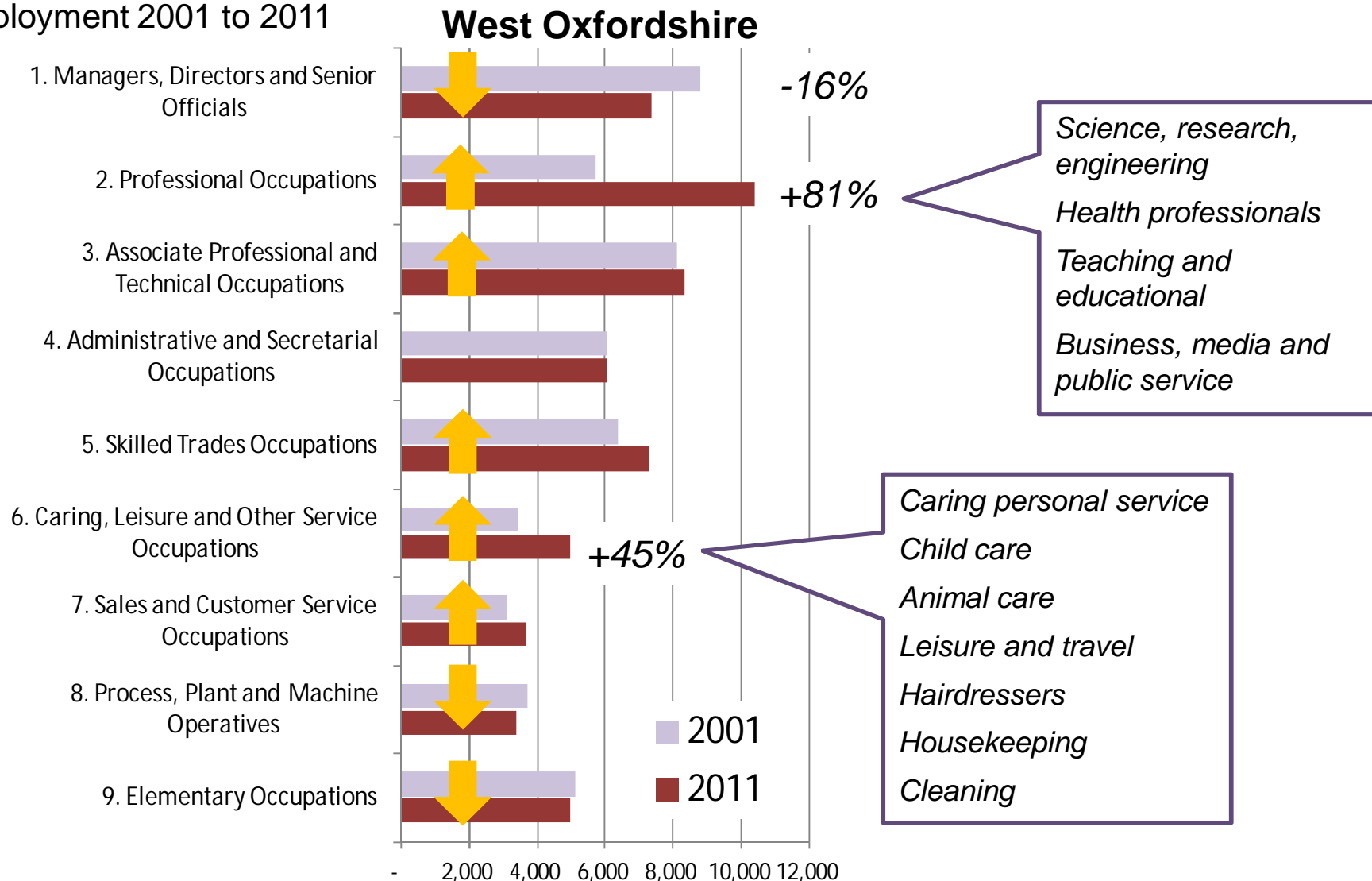


Claimant count is number of people claiming Job Seeker Allowance and National Insurance credits.
Not an official measure of unemployment
DWP from nomis

Decline in managerial jobs and growth in professional occupations – similar to national trend

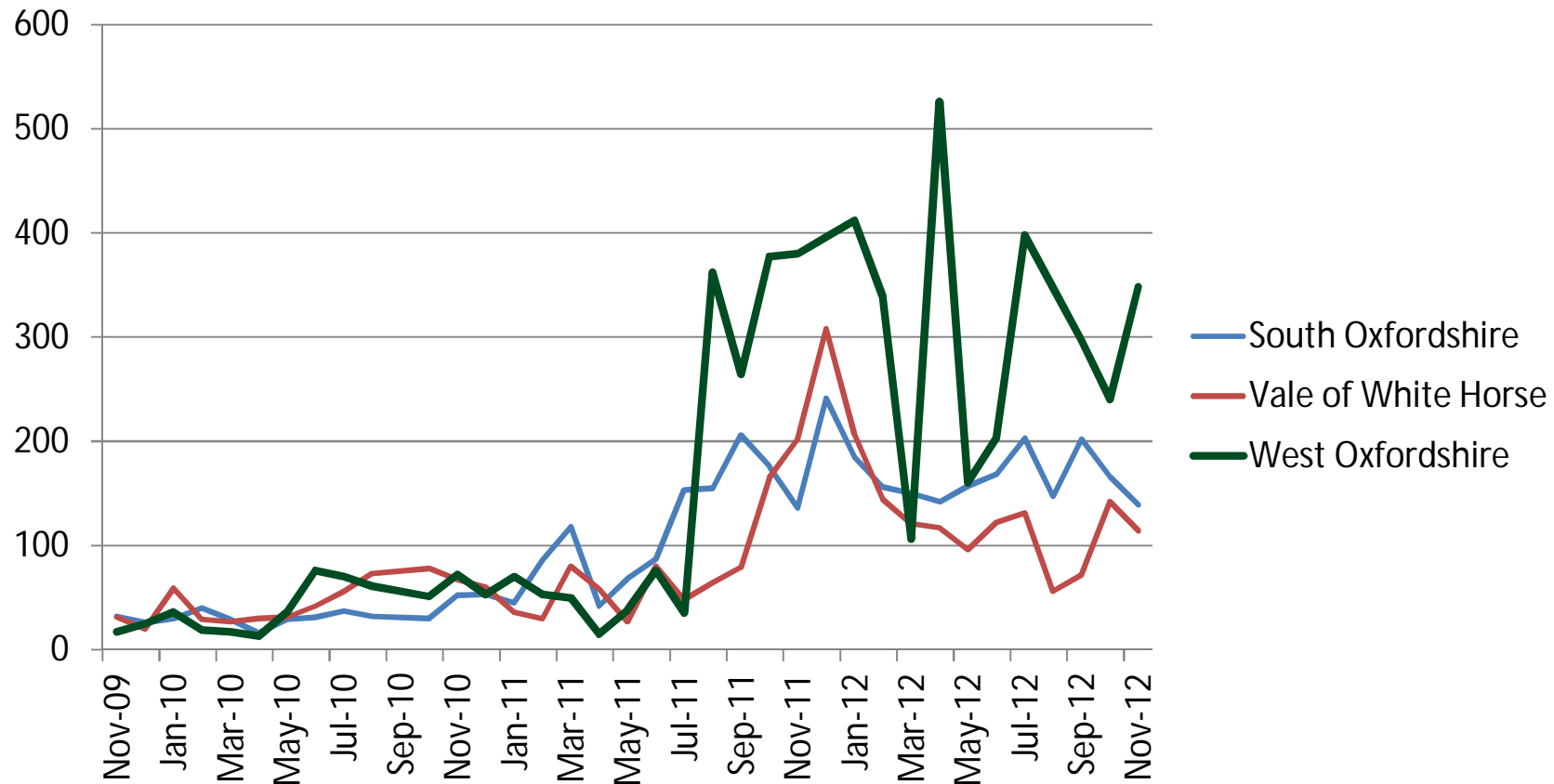


Occupation of people aged 16-74 in employment 2001 to 2011

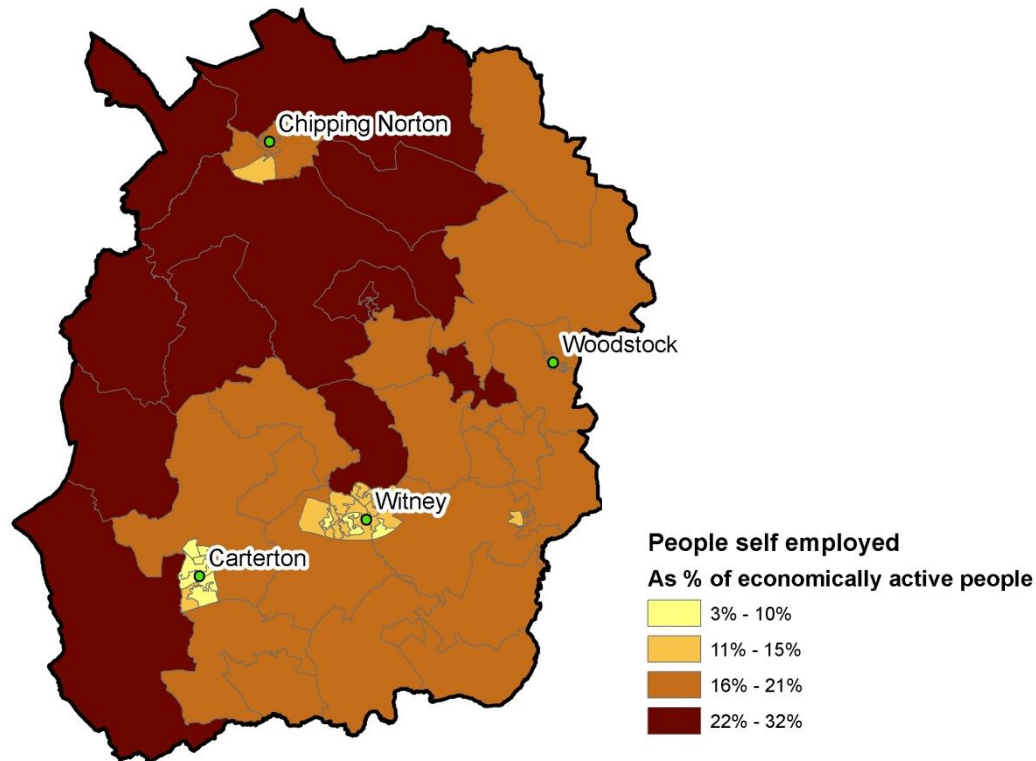
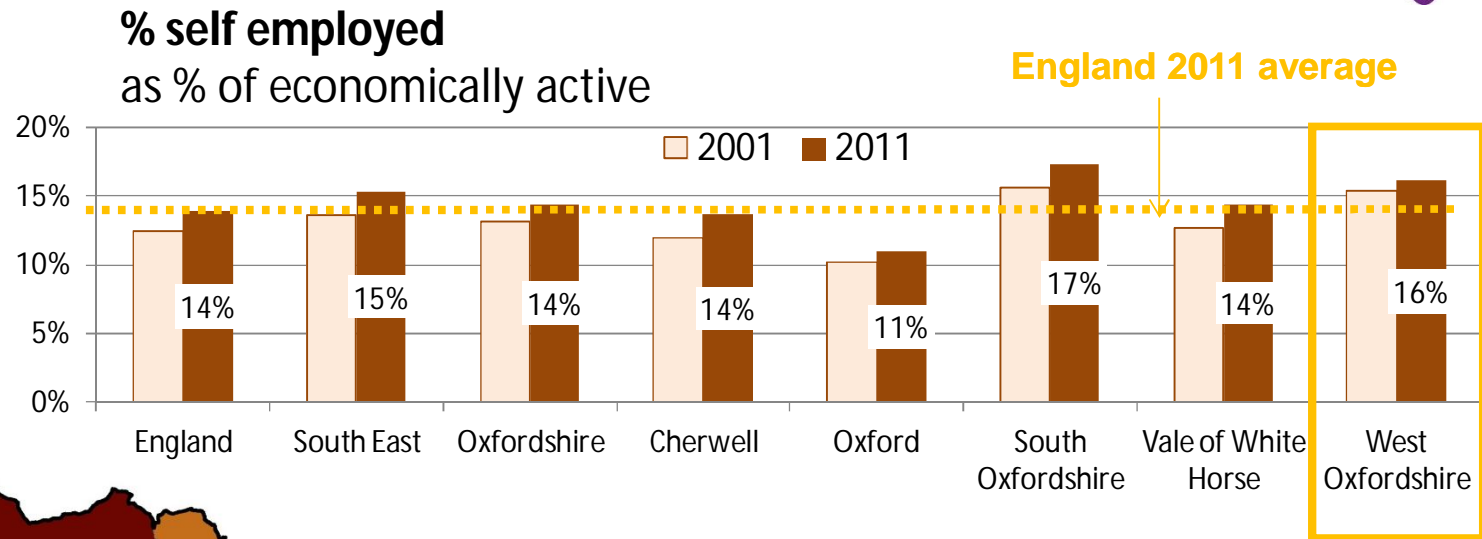


Care worker and home carer vacancies remain hard to fill

6115 : Care assistants and home carers unfilled vacancies



Increase in self employment

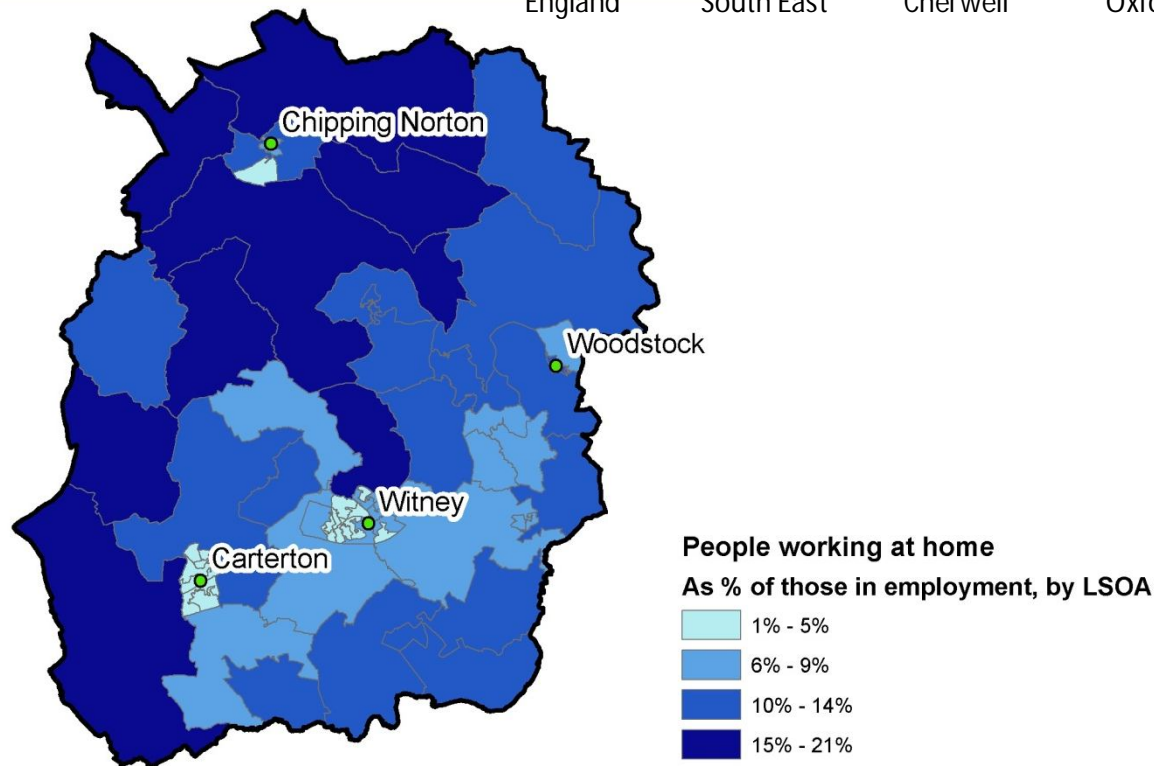
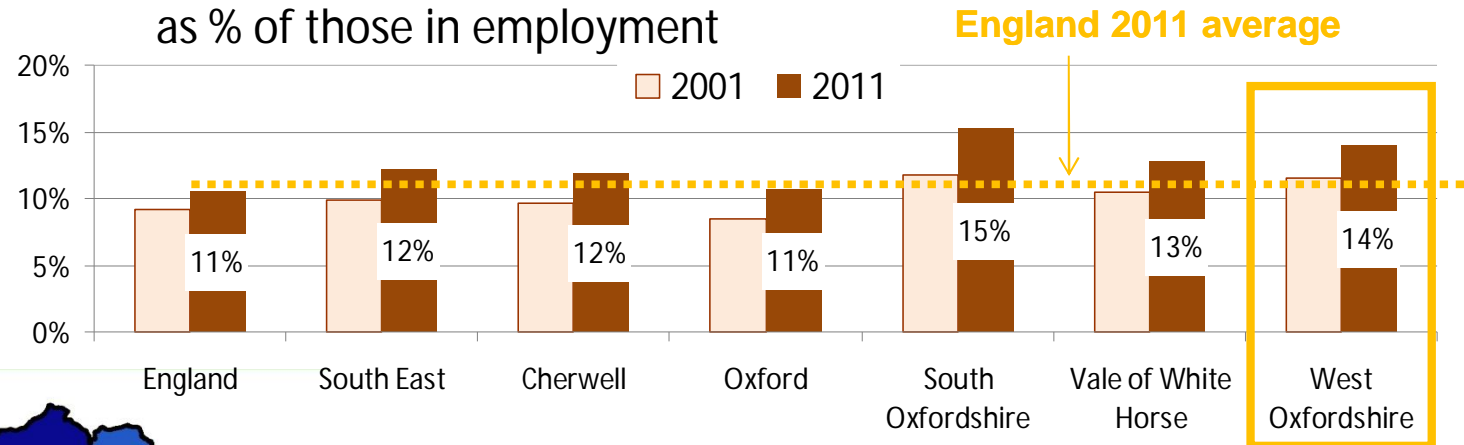


Sources: ONS Census 2001 table UV28; Census 2011 table Q601, from neighbourhood statistics

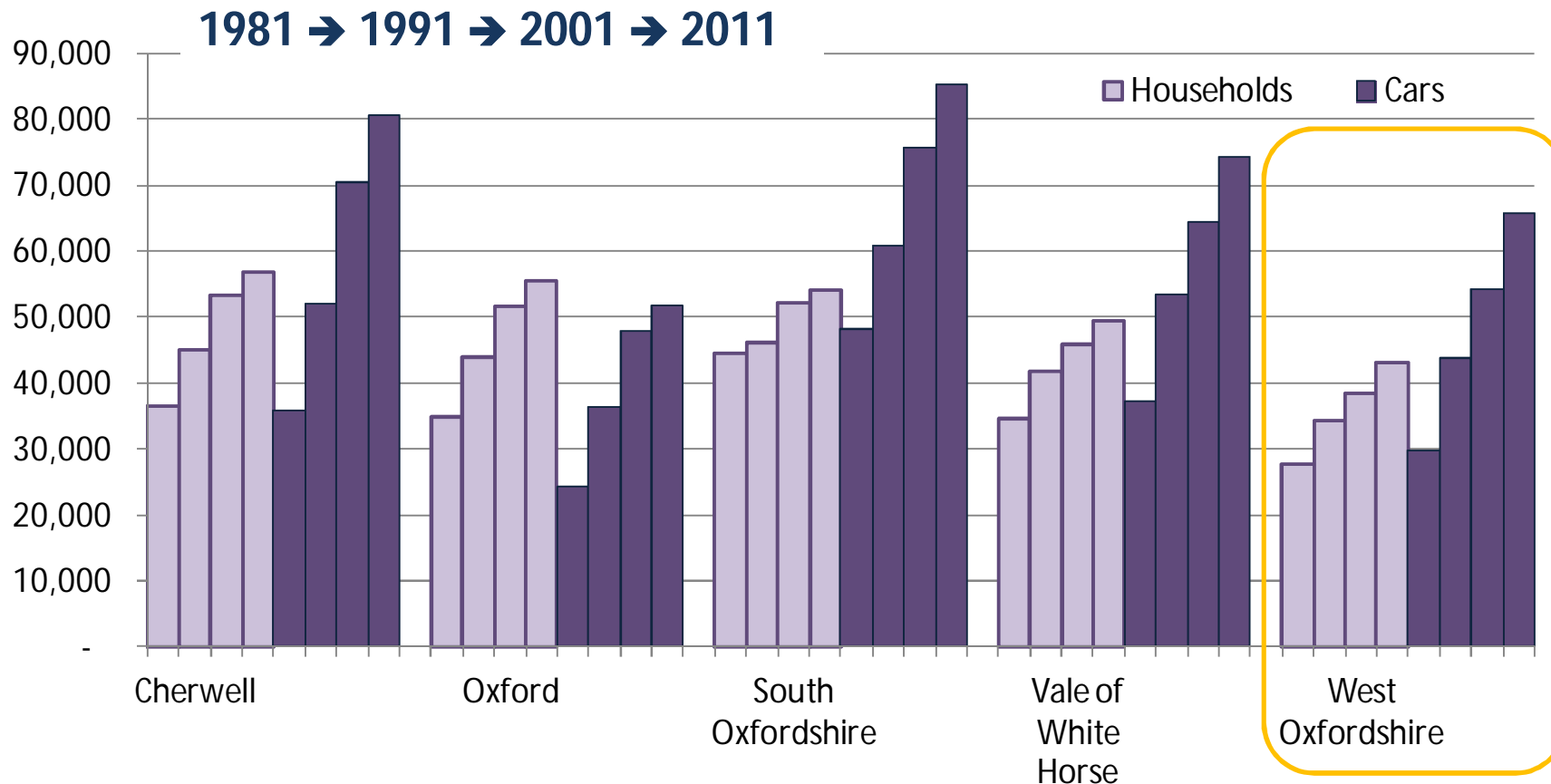
Increase in working from home



Working from home as % of those in employment



Number of cars owned in West Oxfordshire has more than doubled since 1981



| Total number of cars | 1981 | 2011 | 1981 to 2011 | |
|----------------------|--------|--------|--------------|------|
| West Oxfordshire | 29,889 | 65,824 | 35,935 | 120% |

Source: ONS Census 2011 table KS404

1981 to 2001 analysis originally carried out by Oxfordshire County Council, Transport planning team

Summary

Communities

- Majority of population growth in Carterton and Witney
- Ageing population continues long term trend – especially in rural areas

Housing

- Lowest cost housing around 9 times lowest earnings
- Lower % of dwellings with 1 or 2 bedrooms than other districts
- Increase in private rented accommodation

Local economy

- Claimant count continues to decline
- Decline in % managerial jobs, increase in professional and technical
- Increase in self employment and part time working
- Increase in working from home, increase in number of cars

LOCAL PROFILES



Chipping Norton – a changing population

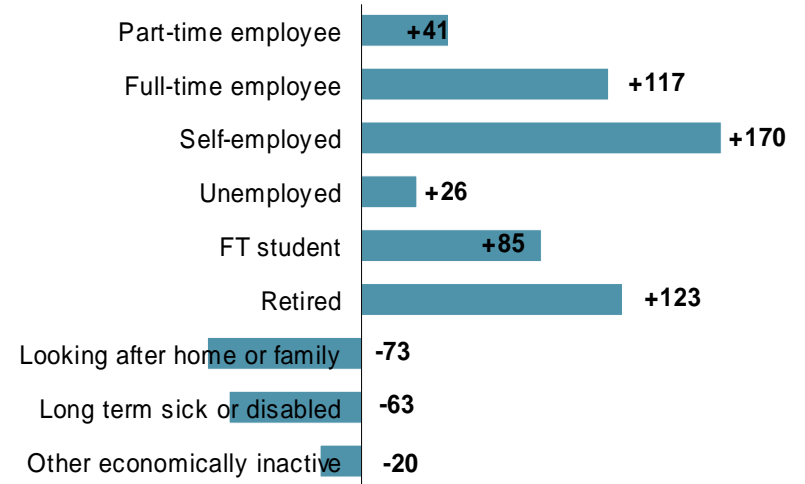
All residents aged 16 to 74 years by NS-SEC, 2011



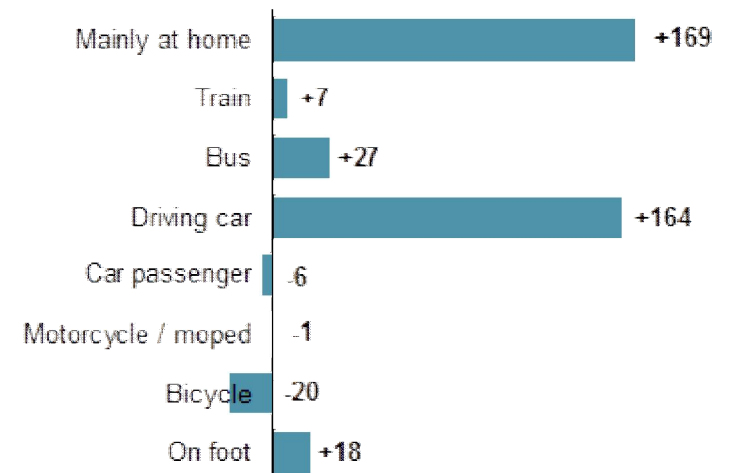
Proportion of residents whose day-to-day activities are limited because of a long-term health problem or disability (2011)



Change in population by economic activity, 2001 - 2011

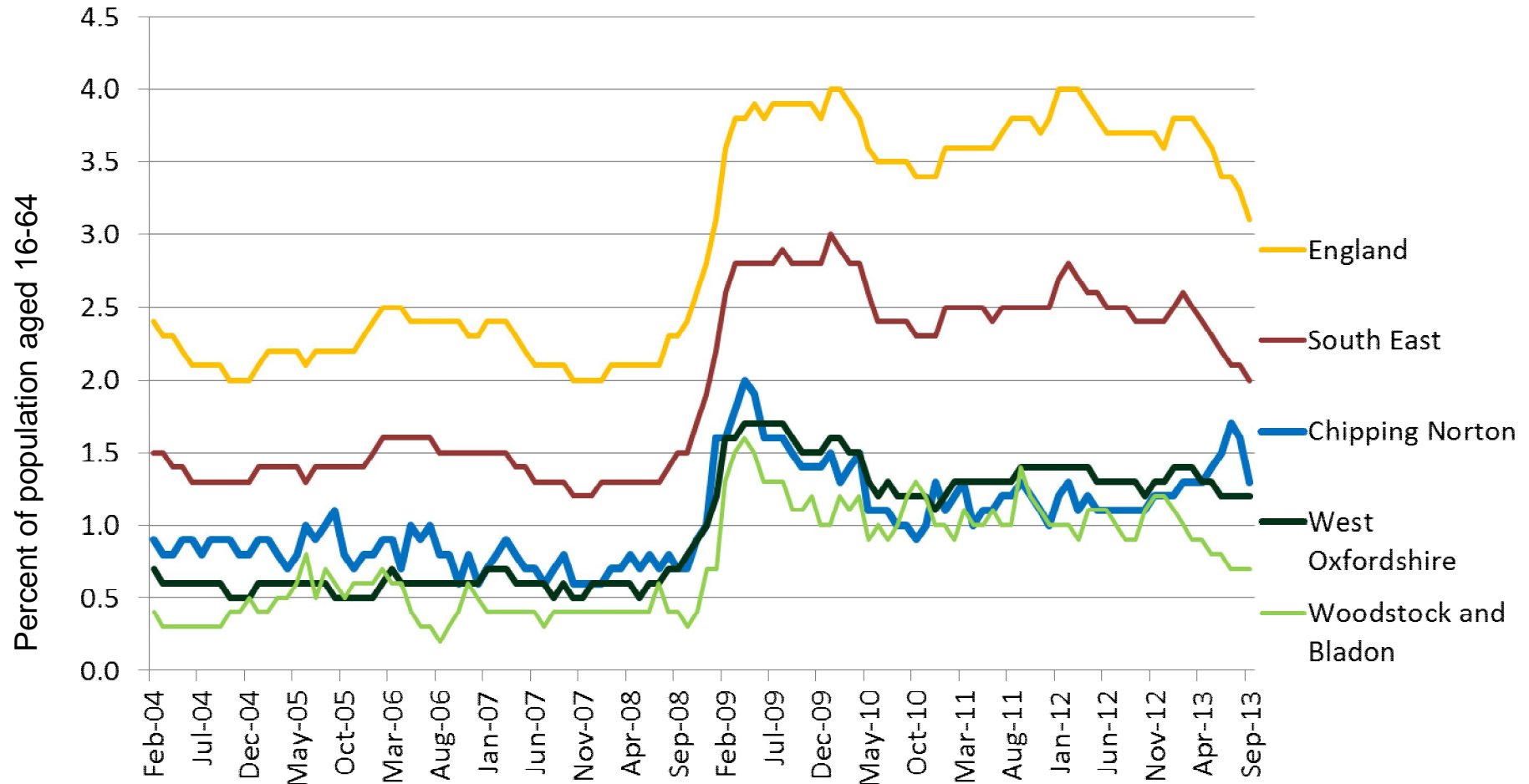


Change in population in employment aged 16-74 by method of travel to work, 2001 - 2011



Chipping Norton – increasing unemployment?

Claimant residence-based rate February 2004 to September 2013



Claimant count is number of people claiming Job Seeker Allowance and National Insurance credits. Residence-based rate is the official measure below national/regional level. It expresses the number of claimants as a percentage of the population aged 16-64, sourced from the mid-year population estimates. Not an official measure of unemployment
DWP from nomis

FINDING OUT MORE..

- Source data can be downloaded from www.neighbourhood.statistics.gov.uk and www.nomisweb.co.uk
- Visualisation tools available on ONS website www.ons.gov.uk/census
- Data for Oxfordshire and visualisation tools at insight.oxfordshire.gov.uk
- Health profile from Public Health England http://www.apho.org.uk/?QN=P_HEALTH_PROFILES
- Analysis of data for West Oxfordshire www.oxford.gov.uk/districtdataservice

