

West Oxfordshire Apprenticeships 2016/17

Bella Image, District Data Analyst

2018-05-04

This data note on apprenticeships has been compiled using data from the Department of Education (DfE) going up to 2016/17, available here:

<https://www.gov.uk/government/statistical-data-sets/fe-data-library-apprenticeships>.

It is emphasized that this is **provisional** data and is subject to revision.

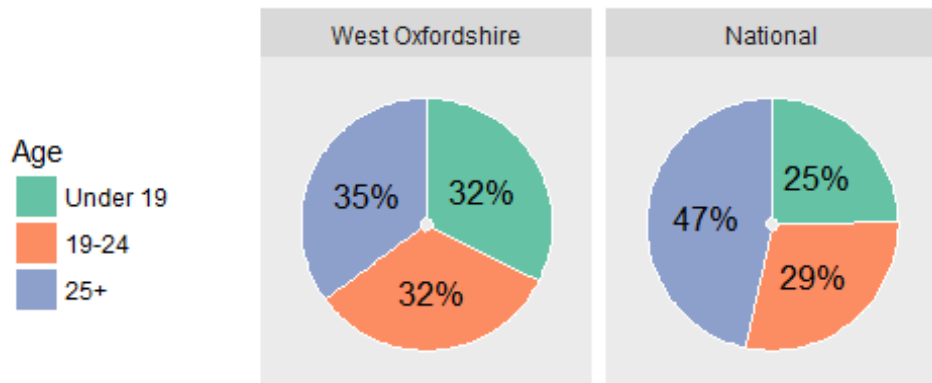
For the data which informs the graphs, please see tables at the end.

For further data and breakdowns, please contact Clare McLening (OxLEP) or Bella Image (Oxford City Council).

A. West Oxfordshire Apprenticeships in 2016/17

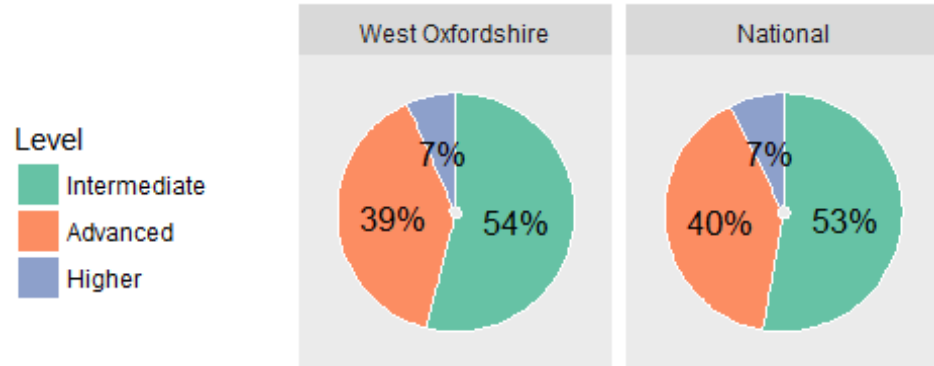
1. There were **750** apprenticeship starts in West Oxfordshire in 2016/17.
2. *Ages:* Nationally 53% of apprenticeship starts have been among those aged under 25. In West Oxfordshire, this figure was 65%. See Figure 1.

Figure 1: West Oxfordshire 2016/17, Age of Apprenticeship Starts



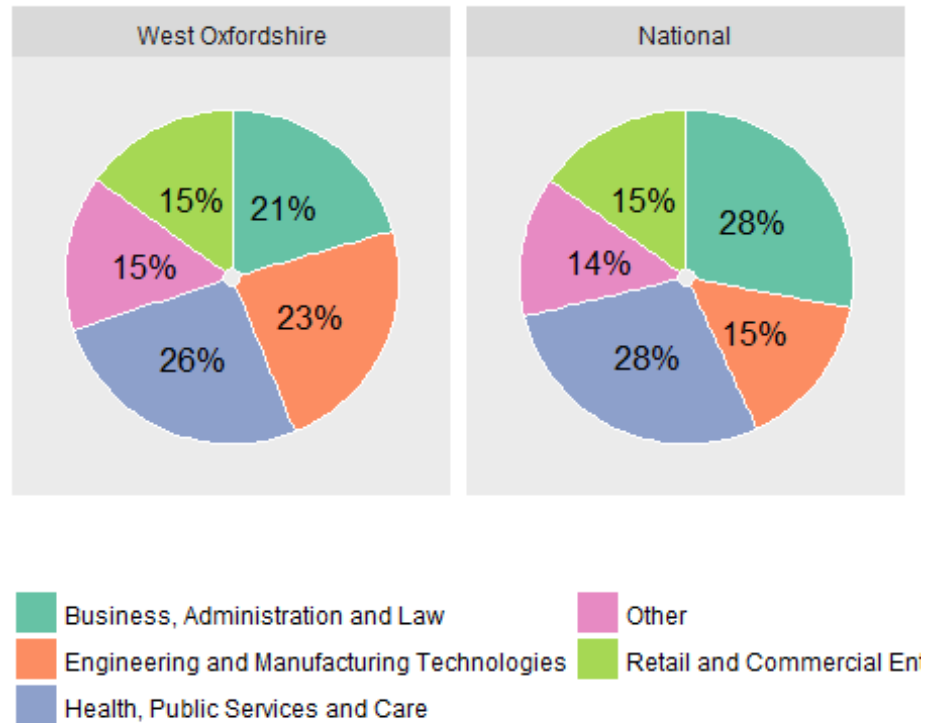
3. *Levels:* The majority of apprenticeships starts were at Intermediate or Advanced levels. However, the number of starts at Higher level has increased through time; indeed, degree level apprenticeships are now available (although there is not yet data for this). See Figure 2.

Figure 2: West Oxfordshire 2016/17, Level of Apprenticeship Starts



4. *Subject Sectors:* Apprentices may choose from a wide variety of subjects, as can be seen in Figure 3. West Oxfordshire has proportionally more starts in engineering than the national average.

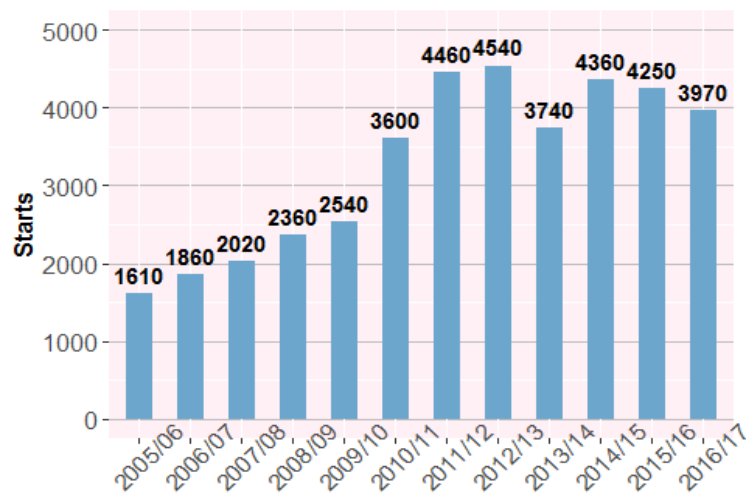
Figure 3: West Oxfordshire 2016/17, Subjects of Apprenticeship Starts



B. Time Series

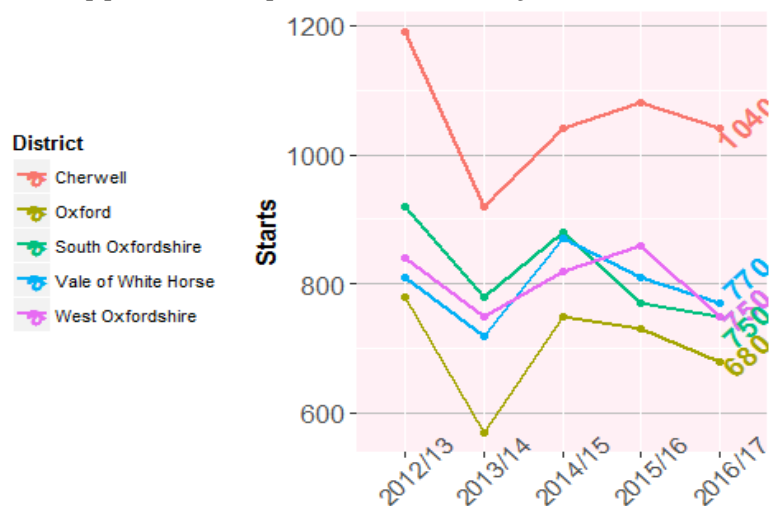
5. *History:* The current time series for apprenticeship starts goes back to 2005/06.
 - In 2010/11 and 2011/12 there was a considerable increase in starts, mostly due to increased government funding.
 - In 2013/14 starts went down due to the introduction of the Advanced Learner Loan. This particularly affected those aged 25+ (compare Figure 6 below).
 - In 2014/15 the loan was abolished for Apprentices, leading to an increase to almost the previous level.

Figure 4: Oxfordshire Apprenticeships since 2005/6



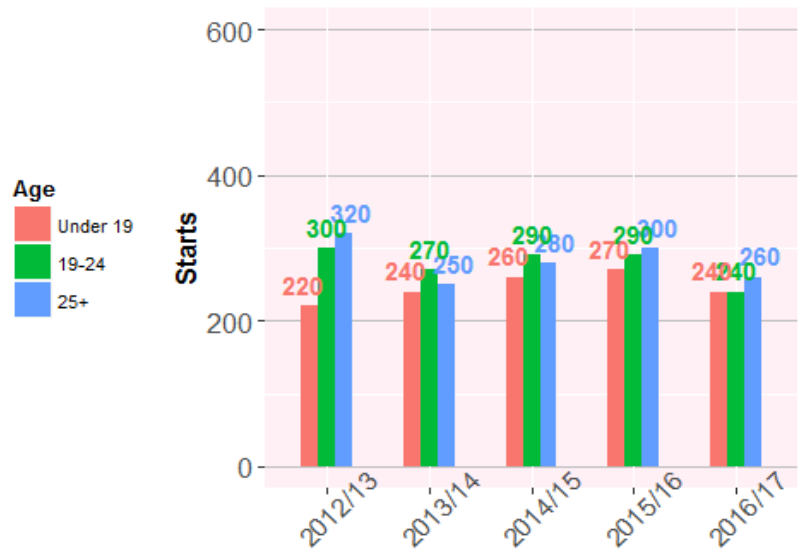
6. Since 2012/3, the data has been broken down by Oxfordshire district; see Figure 5. The last few years highlight the 2013/4 drop and a small recent decline. However, these figures are still far higher than a decade before.

Figure 5: Apprenticeship Starts across Oxfordshire districts



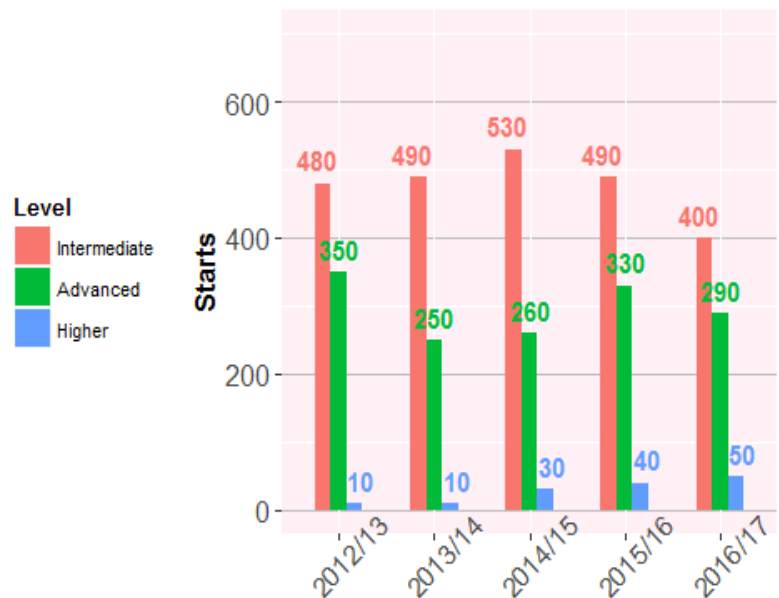
7. *Ages*: Figure 6 shows that the number of apprenticeship starts by age group.

Figure 6: Ages of Apprenticeship Starts, West Oxfordshire



8. *Levels*: Apprenticeships can be done at a number of levels, namely Intermediate (=NVQ2), Advanced (=NVQ3), and Higher (=NVQ4 or higher, up to degree level). The number of starts at 'Intermediate' or 'Advanced' levels was lower in 2016/17 than in 2012/13. However there has been an increase in 'Higher' starts, although these are still a minority.

Figure 7: Levels of Apprenticeship Starts, West Oxfordshire



C. Data Tables

Table 1: West Oxfordshire: Apprenticeship Starts by Age

District	Age	2012/13	2013/14	2014/15	2015/16	2016/17
West Oxfordshire	Under 19	220	240	260	270	240
West Oxfordshire	19-24	300	270	290	290	240
West Oxfordshire	25+	320	250	280	300	260
West Oxfordshire	All Ages	840	750	820	860	750
National	Under 19	114500	119800	125900	131400	121300
National	19-24	165400	159100	160200	153900	141100
National	25+	230300	161600	213900	224100	229000
National	All Ages	510200	440400	499900	509400	491300

Table 2: West Oxfordshire: Apprenticeship Starts by Level

District	Level	2012/13	2013/14	2014/15	2015/16	2016/17
West Oxfordshire	Intermediate	480	490	530	490	400
West Oxfordshire	Advanced	350	250	260	330	290
West Oxfordshire	Higher	10	10	30	40	50
West Oxfordshire	All	840	750	820	860	750
National	Intermediate	292800	286500	298300	291300	259400
National	Advanced	207700	144700	181800	190900	195800
National	Higher	9800	9200	19800	27200	36100
National	All	510200	440400	499900	509400	491300

Table 3: West Oxfordshire: Apprenticeship Starts by Sector

Sector Subject	2012/13	2013/14	2014/15	2015/16	2016/17
Agriculture, Horticulture and Animal Care	10	30	30	30	20
Arts, Media and Publishing	0	0	0	10	0
Business, Administration and Law	180	140	160	150	150
Construction, Planning and the Built Environment	20	30	30	50	40
Education and Training	0	0	0	0	0
Engineering and Manufacturing Technologies	200	180	210	240	170
Health, Public Services and Care	160	160	160	180	190
Information and Communication Technology	20	20	20	20	20
Languages, Literature and Culture	0	0	0	0	0
Leisure, Travel and Tourism	30	30	30	20	30
Preparation for Life and Work	0	0	0	0	0
Retail and Commercial Enterprise	220	170	180	160	110
Science and Mathematics	0	0	0	0	0
Unknown	0	0	0	0	0
All	840	750	820	860	750

End of document.