

Vale of White Horse Apprenticeships 2016/17

Bella Image, District Data Analyst

2018-05-04

This data note on apprenticeships has been compiled using data from the Department of Education (DfE) going up to 2016/17, available here:

<https://www.gov.uk/government/statistical-data-sets/fe-data-library-apprenticeships>.

It is emphasized that this is **provisional** data and is subject to revision.

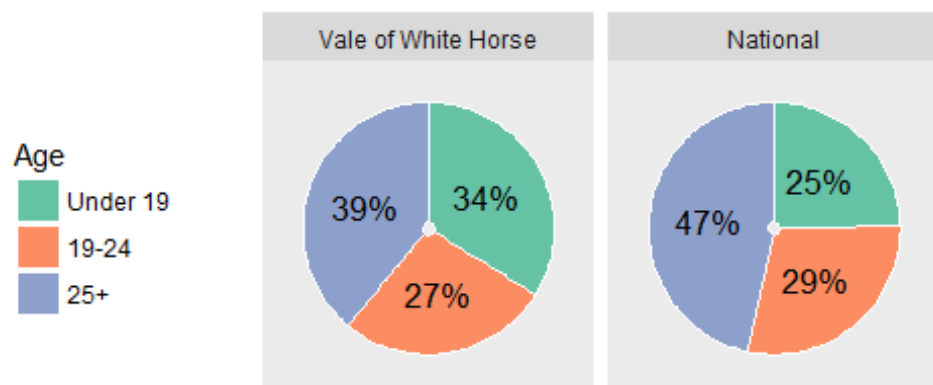
For the data which informs the graphs, please see tables at the end.

For further data and breakdowns, please contact Clare McLening (OxLEP) or Bella Image (Oxford City Council).

A. Vale of White Horse Apprenticeships in 2016/17

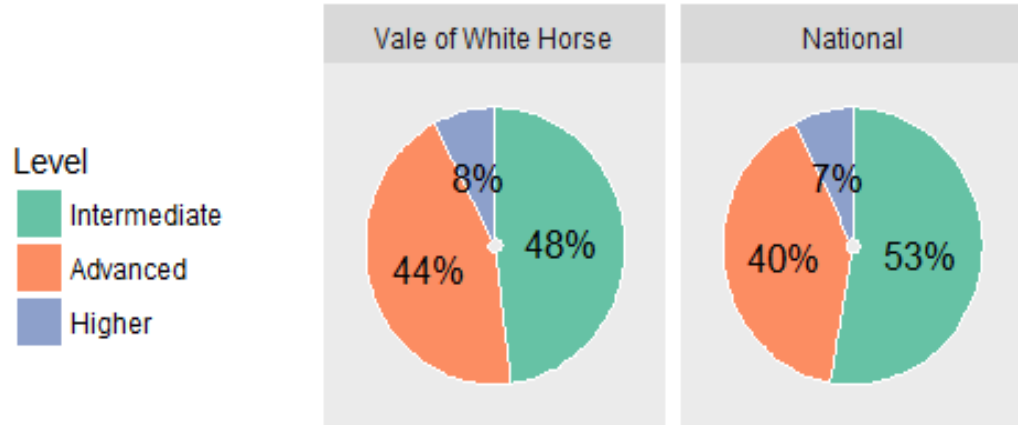
1. There were **770** apprenticeship starts in Vale of White Horse in 2016/17.
2. *Ages*: Nationally, 53% of apprenticeship starts were among those aged under 25. However in Vale WH, 61% are in the younger age groups. See Figure 1.

Figure 1: Vale of White Horse 2016/17, Age of Apprenticeship Starts



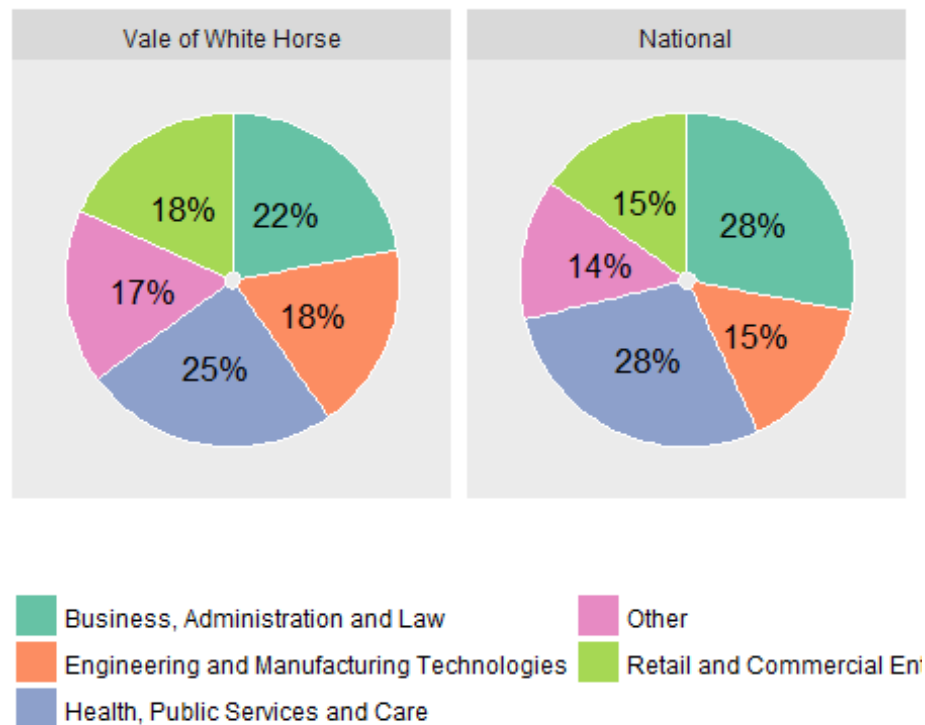
3. *Levels:* The majority of apprenticeships starts were at Intermediate or Advanced levels. However, the number of starts at Higher level has increased through time; indeed, this category now includes degree level apprenticeships. See Figure 2.

Figure 2: Vale of White Horse 2016/17, Level of Apprenticeship Starts



4. *Subject Sectors:* Apprentices may choose from a wide variety of subjects, as can be seen in Figure 3.

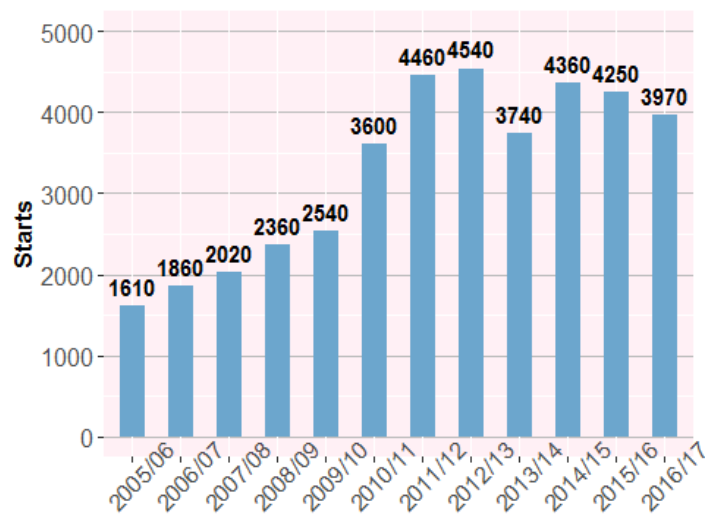
Figure 3: Vale of White Horse 2016/17, Subjects of Apprenticeship Starts



B. Time Series

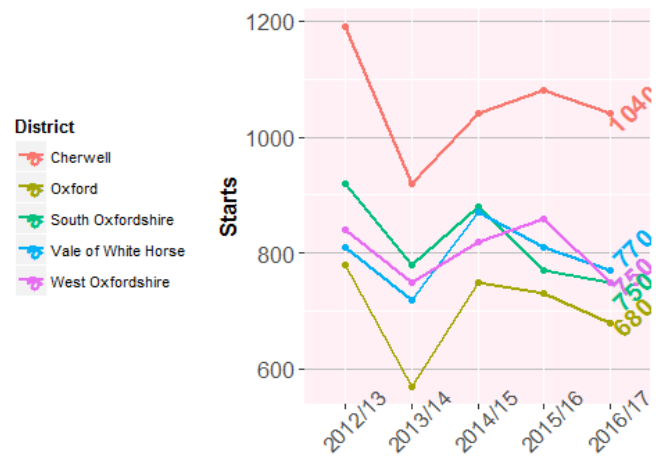
5. *History:* The current time series for apprenticeship starts goes back to 2005/06.
 - In 2010/11 and 2011/12 there was a considerable increase in starts, mostly due to increased government funding.
 - In 2013/14 starts went down due to the introduction of the Advanced Learner Loan. This particularly affected those aged 25+ (compare Figure 6 below).
 - In 2014/15 the loan was abolished for Apprentices, leading to an increase to almost the previous level.

Figure 4: Oxfordshire Apprenticeships since 2005/6



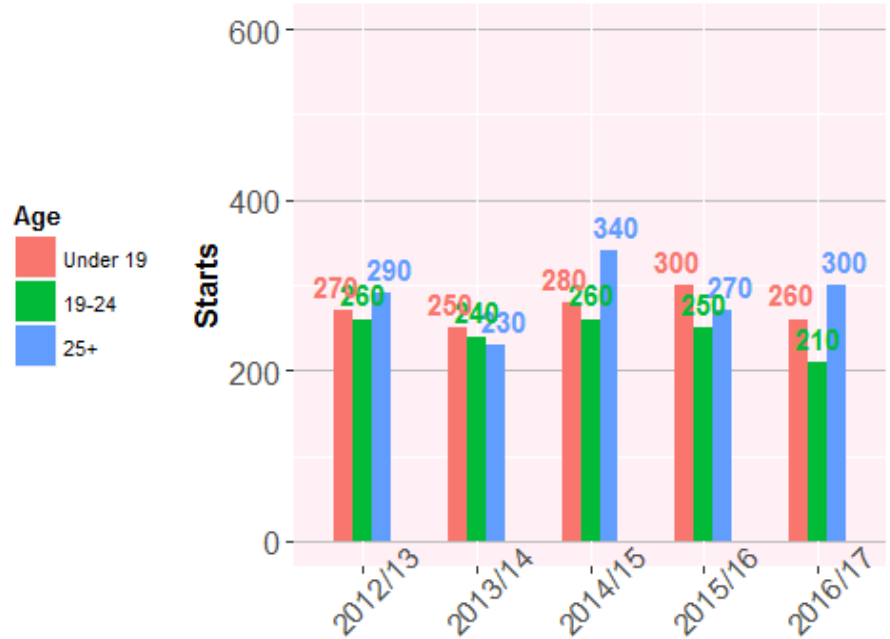
6. Since 2012/3, the data has been broken down by Oxfordshire district; see Figure 5. The last few years highlight the 2013/4 drop and a small recent decline. However, these figures are still far higher than a decade before.

Figure 5: Apprenticeship Starts across Oxfordshire districts



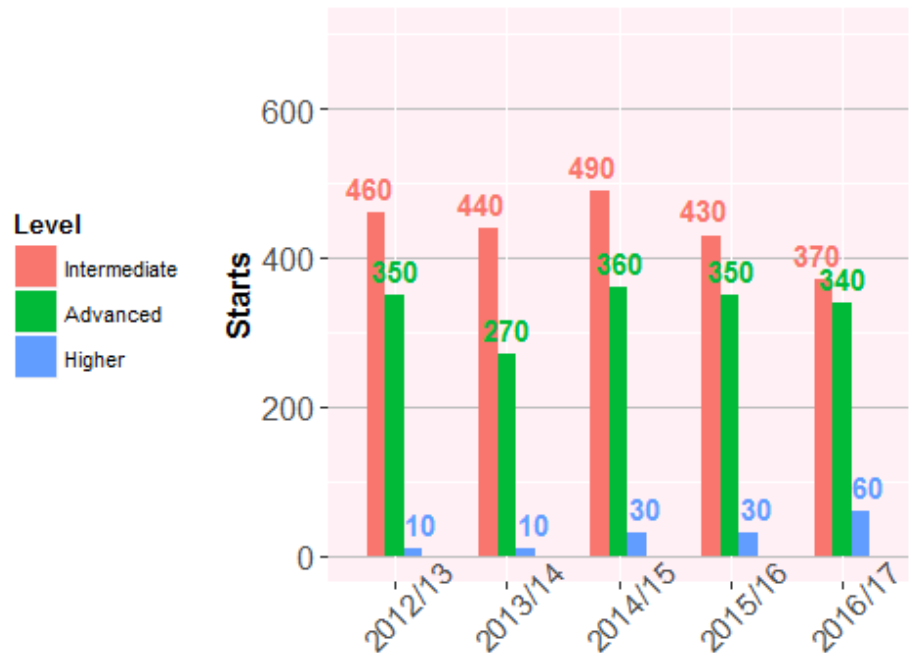
7. *Ages*: Figure 6 shows that the number of apprenticeship starts by age group.

Figure 6: Ages of Apprenticeship Starts, Vale of White Horse



8. *Levels*: Apprenticeships can be done at a number of levels, namely Intermediate (=NVQ2), Advanced (=NVQ3), and Higher (=NVQ4 or higher, up to degree level). The number of 'Intermediate' and 'Advanced' starters was lower in 2016/17 than in 2012/13, but 'Higher' starters have increased (albeit from a low starting point).

Figure 7: Levels of Apprenticeship Starts, Vale of White Horse



C. Data Tables

Table 1: Vale of White Horse: Apprenticeship Starts by Age

District	Age	2012/13	2013/14	2014/15	2015/16	2016/17
Vale of WH	Under 19	270	250	280	300	260
Vale of WH	19-24	260	240	260	250	210
Vale of WH	25+	290	230	340	270	300
Vale of WH	All Ages	810	720	870	810	770
National	Under 19	114500	119800	125900	131400	121300
National	19-24	165400	159100	160200	153900	141100
National	25+	230300	161600	213900	224100	229000
National	All Ages	510200	440400	499900	509400	491300

Table 2: Vale of White Horse: Apprenticeship Starts by Level

District	Level	2012/13	2013/14	2014/15	2015/16	2016/17
Vale of WH	Intermediate	460	440	490	430	370
Vale of WH	Advanced	350	270	360	350	340
Vale of WH	Higher	10	10	30	30	60
Vale of WH	All	810	720	870	810	770
National	Intermediate	292800	286500	298300	291300	259400
National	Advanced	207700	144700	181800	190900	195800
National	Higher	9800	9200	19800	27200	36100
National	All	510200	440400	499900	509400	491300

Table 3: Vale of White Horse: Apprenticeship Starts by Sector

Sector Subject	2012/13	2013/14	2014/15	2015/16	2016/17
Agriculture, Horticulture and Animal Care	30	20	30	30	30
Arts, Media and Publishing	0	0	0	0	0
Business, Administration and Law	210	140	210	170	170
Construction, Planning and the Built Environment	30	40	40	60	40
Education and Training	10	10	0	10	10
Engineering and Manufacturing Technologies	130	150	140	150	140
Health, Public Services and Care	190	180	210	190	190
Information and Communication Technology	20	20	30	20	20
Languages, Literature and Culture	0	0	0	0	0
Leisure, Travel and Tourism	30	30	20	30	30
Preparation for Life and Work	0	0	0	0	0
Retail and Commercial Enterprise	170	130	180	150	140
Science and Mathematics	0	0	0	0	0
Unknown	0	0	0	0	0
All	810	720	870	810	770

End of document.