

# Cherwell Apprenticeships 2016/17

Bella Image, District Data Analyst

2018-05-04

This data note on apprenticeships has been compiled using data from the Department of Education (DfE) going up to 2016/17, available here:

<https://www.gov.uk/government/statistical-data-sets/fe-data-library-apprenticeships>.

It is emphasized that this is **provisional** data and is subject to revision.

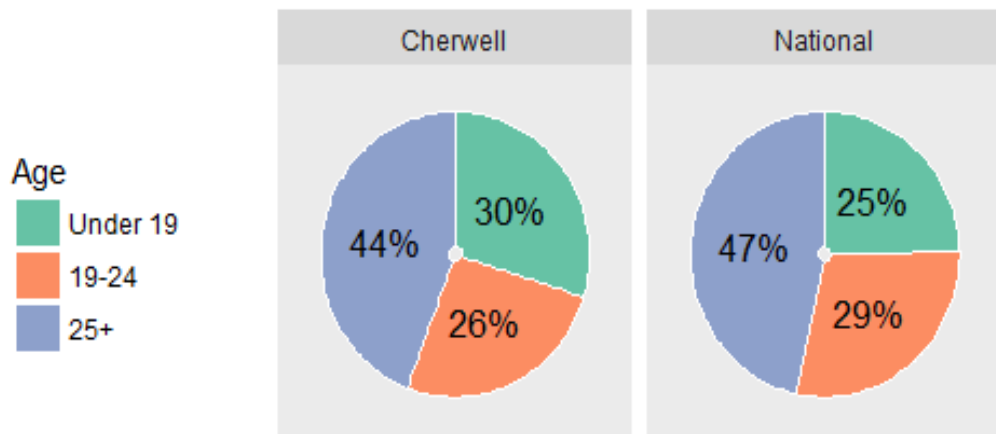
For the data which informs the graphs, please see tables at the end.

For further data and breakdowns, please contact Clare McLening (OxLEP) or Bella Image (Oxford City Council).

## A. Cherwell Apprenticeships in 2016/17

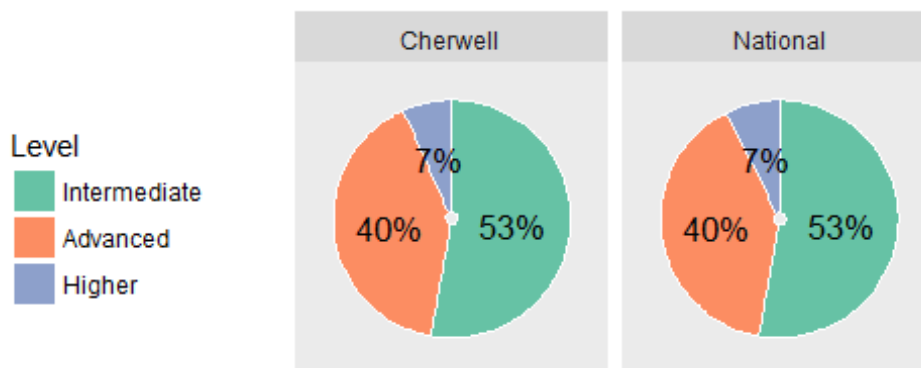
1. There were **1,040** apprenticeship starts in Cherwell in 2016/17.
2. *Ages:* Apprenticeships have traditionally been seen as a training option for young people. However more than two-fifths of apprenticeship starts in 2016/17 were among those aged 25+. See Figure 1.

**Figure 1: Cherwell 2016/17, Age of Apprenticeship Starts**



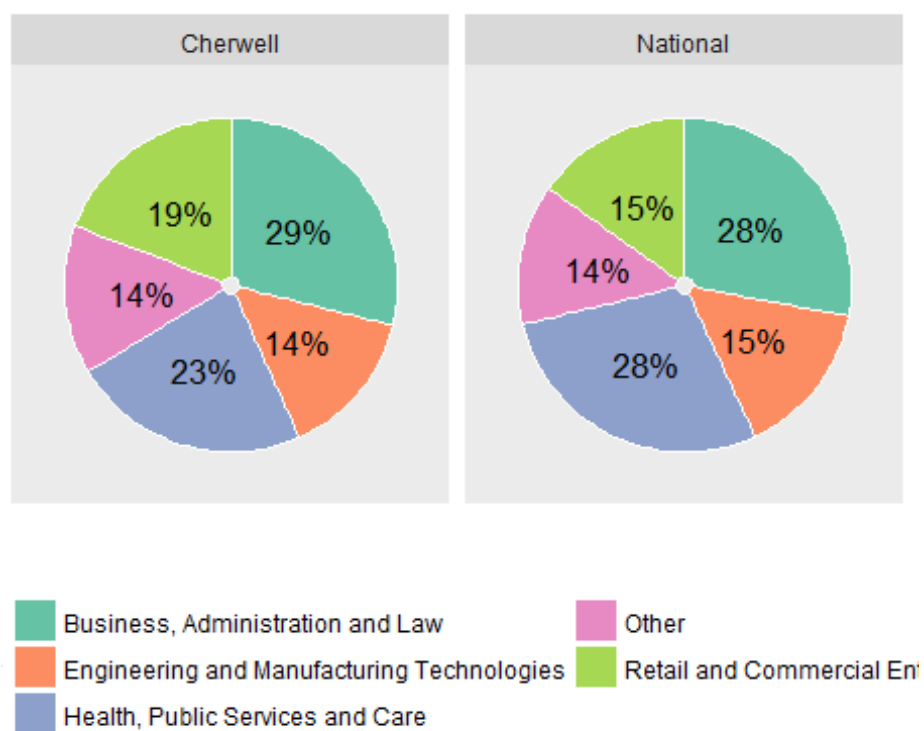
3. *Levels:* The majority of apprenticeships starts were at Intermediate or Advanced levels. However, the number of starts at Higher level has increased through time; indeed, this now includes degree level apprenticeships. See Figure 2.

**Figure 2: Cherwell 2016/7, Level of Apprenticeship Starts**



4. *Subject Sectors:* Apprentices may choose from a wide variety of subjects, as can be seen in Figure 3.

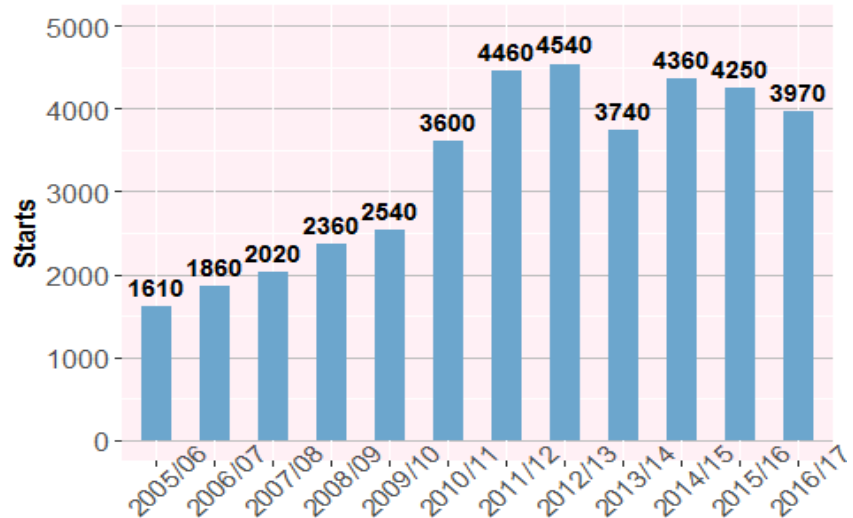
**Figure 3: Cherwell 2016/17, Subjects of Apprenticeship Starts**



## B. Time Series

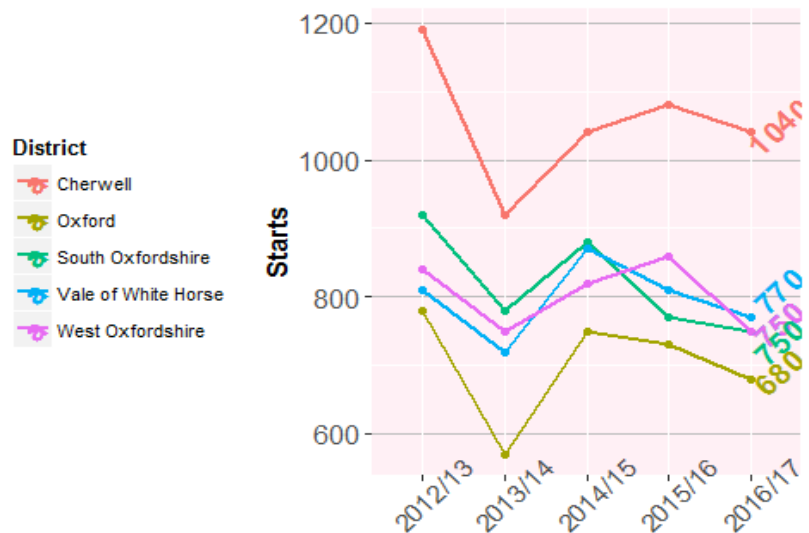
5. *History:* The current time series for apprenticeship starts goes back to 2005/06.
  - In 2010/11 and 2011/12 there was a considerable increase in starts, mostly due to increased government funding.
  - In 2013/14 starts went down due to the introduction of the Advanced Learner Loan. This particularly affected those aged 25+ (compare Figure 6 below).
  - In 2014/15 this loan was abolished for Apprentices, leading to an increase to almost the previous level.

**Figure 4: Oxfordshire Apprenticeships since 2005/6**



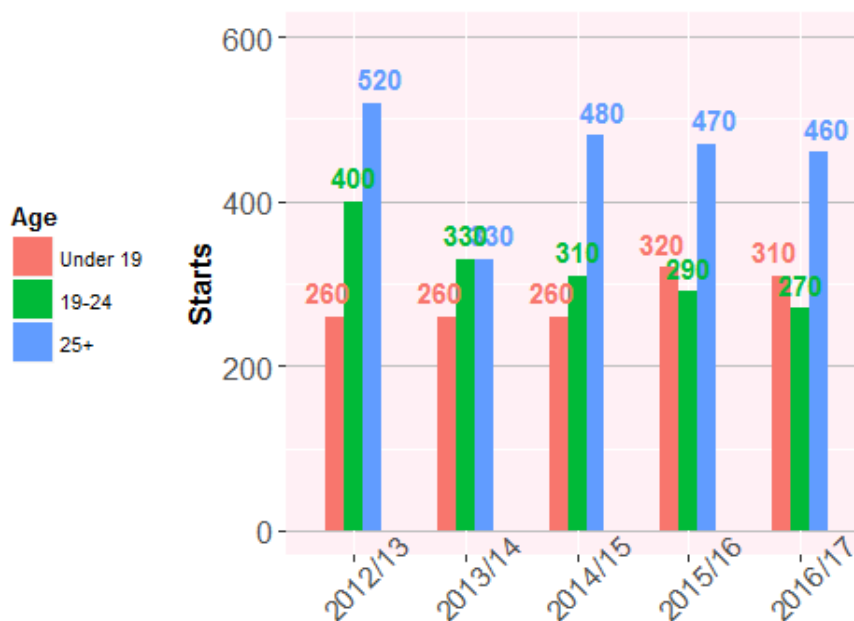
6. Since 2012/3, the data has been broken down by Oxfordshire district; see Figure 5. The last few years highlight the 2013/4 drop and a small recent decline. However, these figures are still far higher than a decade before.

**Figure 5: Apprenticeship Starts across Oxfordshire districts**



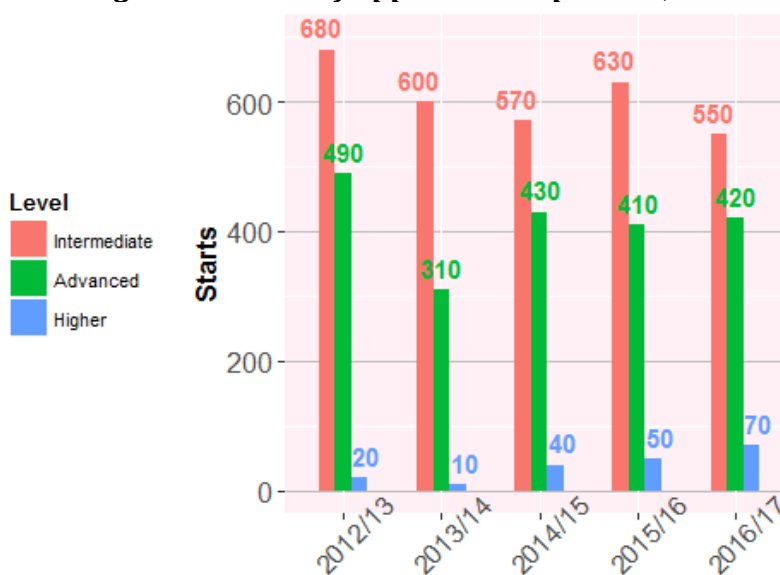
7. *Ages*: Figure 6 shows that the number of apprenticeship starts of those aged 19+ has been decreasing through time, but the number of starts by those aged under 19 has increased.

**Figure 6: Ages of Apprenticeship Starts, Cherwell**



8. *Levels*: Apprenticeships can be done at a number of levels, namely Intermediate (=NVQ2), Advanced (=NVQ3), and Higher (=NVQ4 or higher, up to degree level). Figure 7 shows that in Cherwell, the number of starts of 'intermediate' apprenticeships has decreased through time, but the number of 'higher' apprenticeships has increased.

**Figure 7: Levels of Apprenticeship Starts, Cherwell**



## C. Data Tables

**Table 1: Apprenticeship Starts by Age**

District	Age	2012/13	2013/14	2014/15	2015/16	2016/17
Cherwell	Under 19	260	260	260	320	310
Cherwell	19-24	400	330	310	290	270
Cherwell	25+	520	330	480	470	460
Cherwell	<b>All Ages</b>	<b>1190</b>	<b>920</b>	<b>1040</b>	<b>1080</b>	<b>1040</b>
National	Under 19	114500	119800	125900	131400	121300
National	19-24	165400	159100	160200	153900	141100
National	25+	230300	161600	213900	224100	229000
National	<b>All Ages</b>	<b>510200</b>	<b>440400</b>	<b>499900</b>	<b>509400</b>	<b>491300</b>

**Table 2: Apprenticeship Starts by Level**

District	Level	2012/13	2013/14	2014/15	2015/16	2016/17
Cherwell	Intermediate	680	600	570	630	550
Cherwell	Advanced	490	310	430	410	420
Cherwell	Higher	20	10	40	50	70
Cherwell	<b>All</b>	<b>1190</b>	<b>920</b>	<b>1040</b>	<b>1080</b>	<b>1040</b>
National	Intermediate	292800	286500	298300	291300	259400
National	Advanced	207700	144700	181800	190900	195800
National	Higher	9800	9200	19800	27200	36100
National	<b>All</b>	<b>510200</b>	<b>440400</b>	<b>499900</b>	<b>509400</b>	<b>491300</b>

**Table 3: Apprenticeship Starts by Sector**

Sector Subject	2012/13	2013/14	2014/15	2015/16	2016/17
Agriculture, Horticulture and Animal Care	20	20	10	30	30
Arts, Media and Publishing	0	0	0	0	0
Business, Administration and Law	400	210	280	220	300
Construction, Planning and the Built Environment	30	30	50	40	40
Education and Training	10	10	10	10	20
Engineering and Manufacturing Technologies	200	190	190	240	150
Health, Public Services and Care	180	200	180	260	240
Information and Communication Technology	30	30	30	20	20
Languages, Literature and Culture	0	0	0	0	0
Leisure, Travel and Tourism	70	30	50	40	40
Preparation for Life and Work	0	0	0	0	0
Retail and Commercial Enterprise	250	210	250	230	200
Science and Mathematics	0	0	0	0	0
Unknown	0	0	0	0	0
<b>All</b>	<b>1190</b>	<b>920</b>	<b>1040</b>	<b>1080</b>	<b>1040</b>

End of document.